

WAAS CH <b>93638</b> <b>W31A</b>	APP CRS <b>318°</b>	Rwy Idg TDZE <b>1900</b> Apt Elev <b>1907</b>
--	------------------------	---

RNAV (GPS) RWY 31

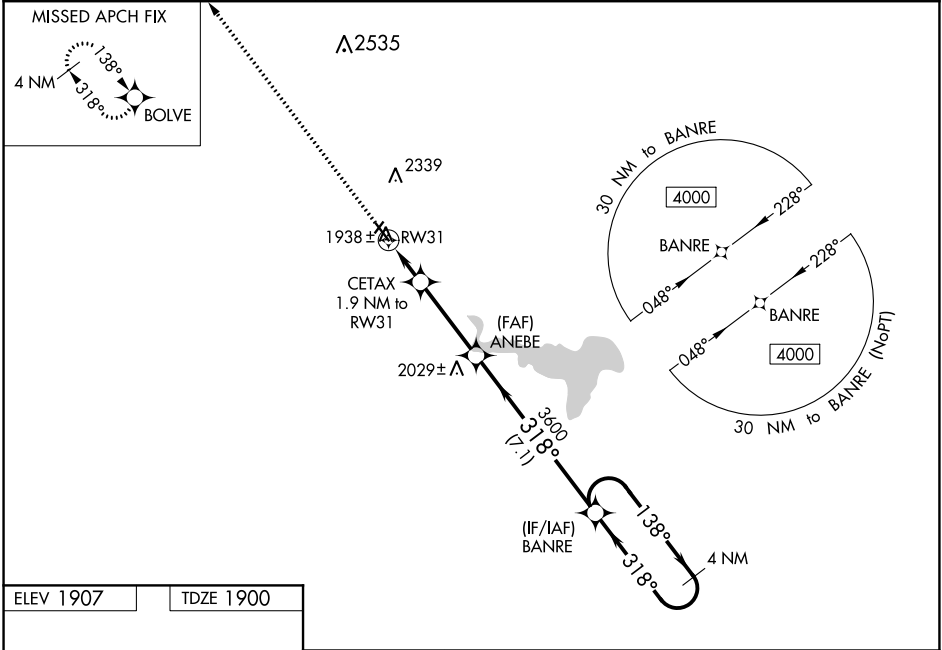
PHILLIPSBURG MUNI (PHG)

RNP APCH

Baro-VNAV NA when using Hays Rgnl altimeter setting. For uncompensated Baro-VNAV systems, LNAV/VNAV NA below -18°C or above 54°C. Circling NA northeast of Rwy 13-31. Rwy 31 helicopter visibility reduction below 1 SM NA. Circling NA to Rwy's 3 and 21. When local altimeter setting not received, use Hays Rgnl altimeter setting and increase all DA and MDA 140 feet, increase LPV and LNAV/VNAV visibilities ¼ mile all Cats and LNAV and Circling Cat C visibility ¼ mile.

MISSED APPROACH:  
Climb to 4000 direct BOLVE and hold.

AWOS-3PT <b>119.125</b>	DENVER CENTER <b>132.7 226.675</b>	UNICOM <b>122.8 (CTAF) 0</b>
----------------------------	---------------------------------------	---------------------------------



Δ2535

Δ2339

1938 ± Δ RW31

CETAX  
1.9 NM to RW31

(FAF) ANEBE

2029 ± Δ

3600

318°

138°

(IF/IAF) BANRE

4 NM

30 NM to BANRE

4000

048°

228°

BANRE

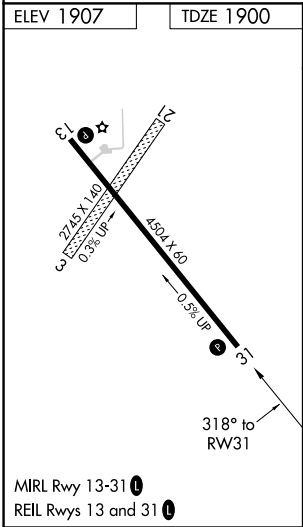
30 NM to BANRE (NoPT)

4000

048°

228°

BANRE



27.45 X 40

0.5° UP

450.4 X 60

0.5° UP

318° to RW31

MIRL Rwy 13-31 0

REIL Rwy's 13 and 31 0

4000	BOLVE	ANEBE	BANRE	4 NM Holding Pattern
*LNAV only	CETAX 1.9 NM to RW31	3600	138° → 4000 ← 318°	GP 3.00° TCH 60
RW31	2540*	3600		
1.9	3.3 NM	7.1 NM		
CATEGORY	A	B	C	D
LPV DA	2150-1	250 (300-1)		NA
LNAV/VNAV DA	2150-1	250 (300-1)		NA
LNAV MDA	2200-1	300 (300-1)		NA
CIRCLING	2280-1 373 (400-1)	2360-1 453 (500-1)	2380-1½ 473 (500-1½)	NA