

WAAS CH 42639 W35A	APP CRS 354°	Rwy Idg 4401 TDZE 1689 Apt Elev 1692
--	------------------------	---

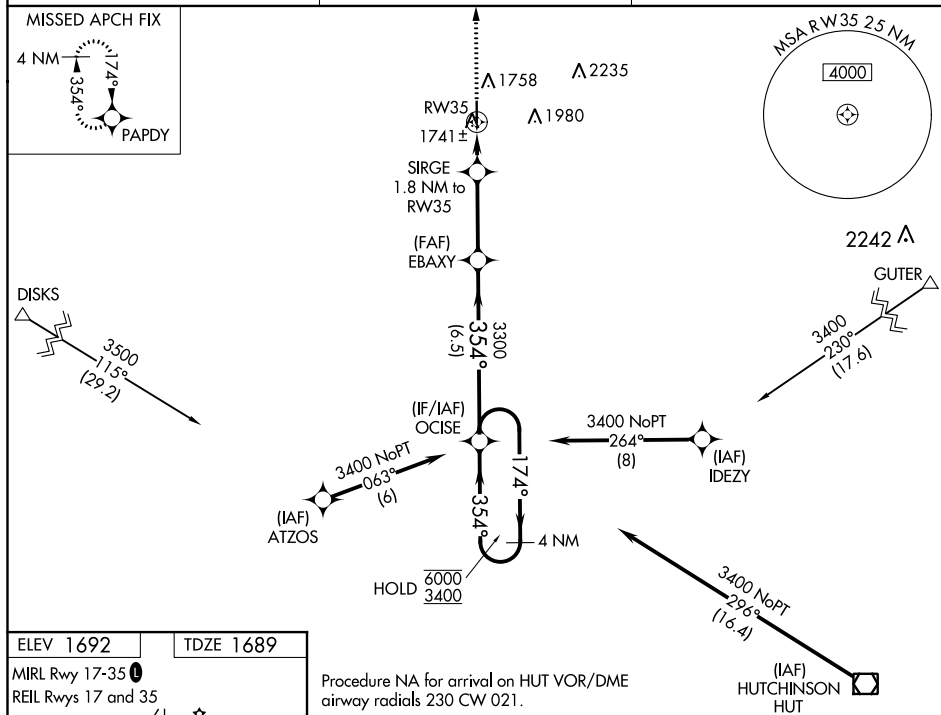
RNAV (GPS) RWY 35
LYONS-RICE COUNTY MUNI (LYO)

RNP APCH.

T Baro-VNAV and VDP NA when using Hutchinson altimeter setting. For uncompensated
A Baro-VNAV systems, LNAV/VNAV NA below -18°C or above 54°C. Circling Rwy
17 NA at night. When local altimeter setting not received, use Hutchinson altimeter setting.

MISSED APPROACH:
Climb to 3400 direct
PAPDY and hold.

AWOS-3P 119.925	KANSAS CITY CENTER 118.8 322.425	UNICOM 122.8 (CTAF) ①
---------------------------	--	---------------------------------



4401 X 75

0.4% UP

35

354° to RW35

3400 PAPI

3300 EBAXY

3300 OCISE

4 NM Holding Pattern

6000/3400

GP 3.00° TCH 45

CATEGORY	A	B	C	D
LPV DA	2016-1 327 (400-1 1/2)		NA	
LNAV/VNAV DA	2016-1 327 (400-1 1/2)		NA	
LNAV MDA	2080-1 391 (400-1)		NA	
CIRCLING	2260-1 568 (600-1)		NA	