

WAAS  
CH **77809**  
**W16A**

APP CRS  
**163°**

Rwy Idg **4301**  
TDZE **1803**  
Apt Elev **1803**

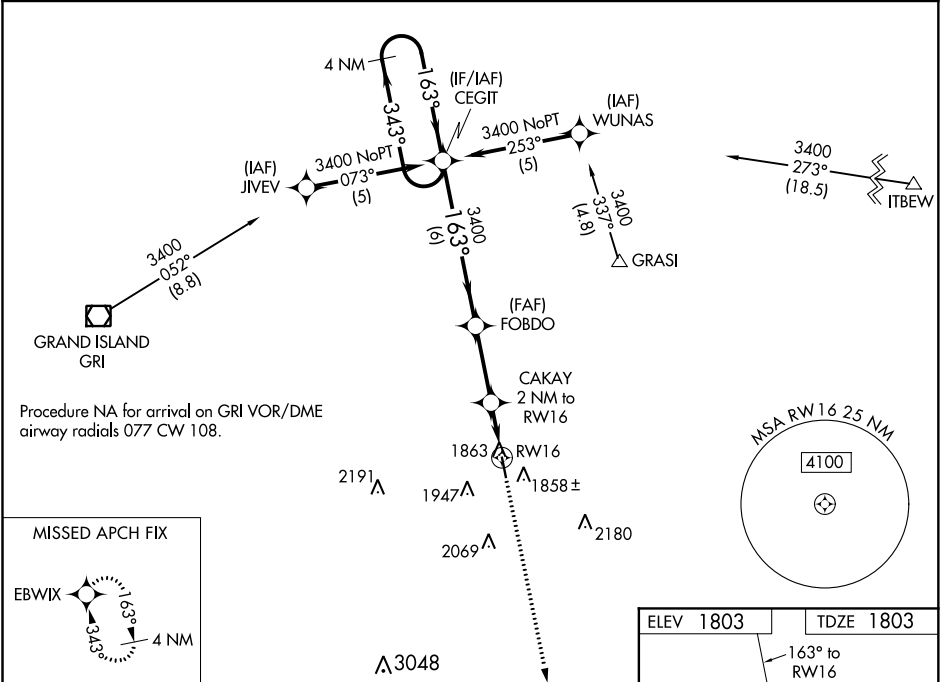
**RNAV (GPS) RWY 16**

AURORA MUNI-AL POTTER FIELD (AUH)

**⚠** Baro-VNAV NA when using Grand Island altimeter setting. For uncompensated Baro-VNAV systems, LNAV/VNAV NA below -18°C (0°F) or above 54°C (130°F). DME/DME RNP-0.3 NA. Visibility reduction by helicopters NA. When local altimeter setting not received, use Grand Island altimeter setting and increase all DA 41 feet and all MDA 60 feet and LPV all Cats visibility ¼ mile. VDP NA when using Grand Island altimeter setting.

**MISSED APPROACH:**  
Climb to 3400 direct  
EBWIX and hold.

AWOS-3 <b>121.225</b>	MINNEAPOLIS CENTER <b>119.4 278.8</b>	UNICOM <b>122.8 (CTAF) 0</b>
--------------------------	--	---------------------------------



4 NM Holding Pattern

CEGIT FOBDO CAKAY 2 NM to RW16

GP 3.00° TCH 40

3400 433° 163° 3400

\*2480

\*1 NM to RW16

RW16

EBWIX 3400

\*LNAV only

CATEGORY	A	B	C	D
LPV DA	2102-1 299 (300-1)		NA	
LNAV/VNAV DA	2133-1¼ 330 (400-1¼)		NA	
LNAV MDA	2160-1 357 (400-1)		NA	
CIRCLING	2300-1 497 (500-1)	2340-1 537 (600-1)	NA	

ELEV 1803 TDZE 1803

163° to RW16

91 1852± 34

AS01 X75

MIRL Rwy 16-34 0