

VOR/DME TDD
108.6
Chan **23**

APP CRS
090°

Rwy Idg
TDZE
Apt Elev
4400
2925
2925

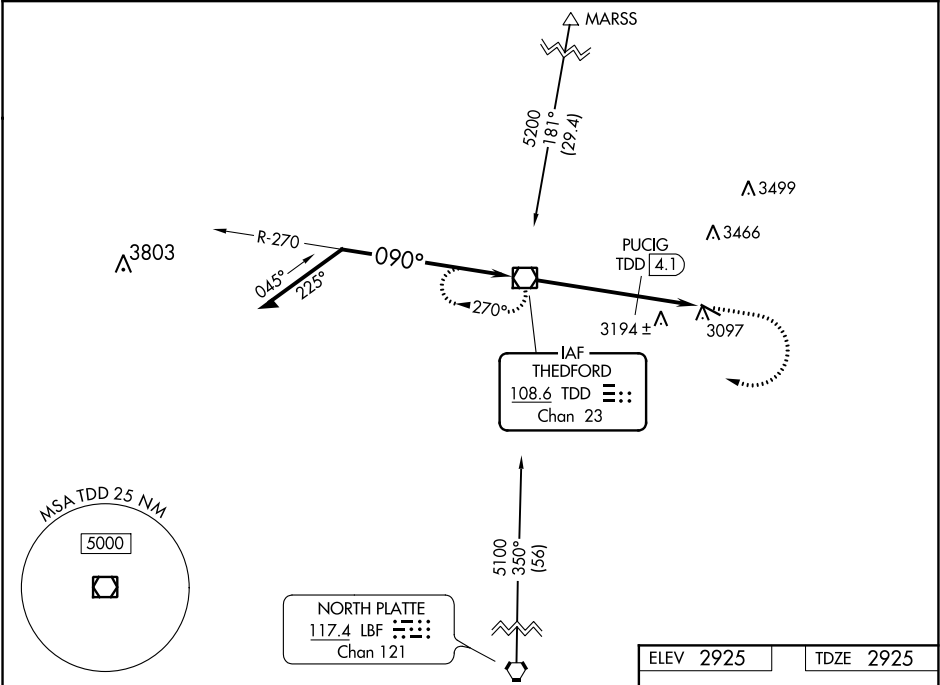
VOR RWY 11
THOMAS COUNTY (TIF')

NA

Visibility reduction by helicopters NA. When local altimeter setting not received, use North Platte altimeter setting and increase all MDA 140 feet, increase S-11 Cat B and Circling Cat B visibility ¼ mile. VDP NA when using North Platte altimeter setting.

MISSED APPROACH: Climb to 4000 then climbing right turn to 5100 direct TDD VOR/DME and hold.

AWOS-3 120.825	DENVER CENTER 127.95 338.2	CTAF 122.9
--------------------------	--------------------------------------	----------------------



<div><div><div>Remain within 10 NM</div><div>5100</div><div>270°</div><div>TDD VOR/DME</div></div><div><div>5100</div><div>090°</div><div>3.14°</div><div>TCH 40</div><div>090°</div><div>*3640</div><div>4.1 NM</div><div>0.7</div><div>1.6 NM</div></div><div><div>TDD 4.1</div><div>TDD 4.8</div><div>TDD 6.4</div></div></div>			<div><div>4000</div><div>5100</div><div>TDD</div></div>	
<div>*3780 when using North Platte altimeter setting.</div>				
CATEGORY	A	B	C	D
S-11	3640-1	715 (800-1)	NA	
CIRCLING	3640-1	715 (800-1)	NA	
PUCIG FIX MINIMUMS				
S-11	3500-1	575 (600-1)	NA	
CIRCLING	3500-1	575 (600-1)	NA	

ELEV 2925

TDZE 2925

090° 6.4 NM from FAF

4400 X 60

0.3% UP

MIRL Rwy 11-29

FAF to MAP 6.4 NM

Knots	60	90	120	150	180
Min:Sec	6:30	4:20	3:15	2:36	2:10