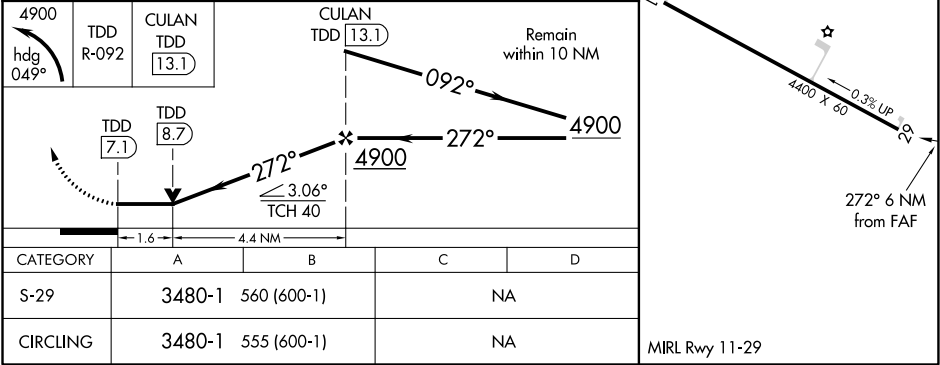
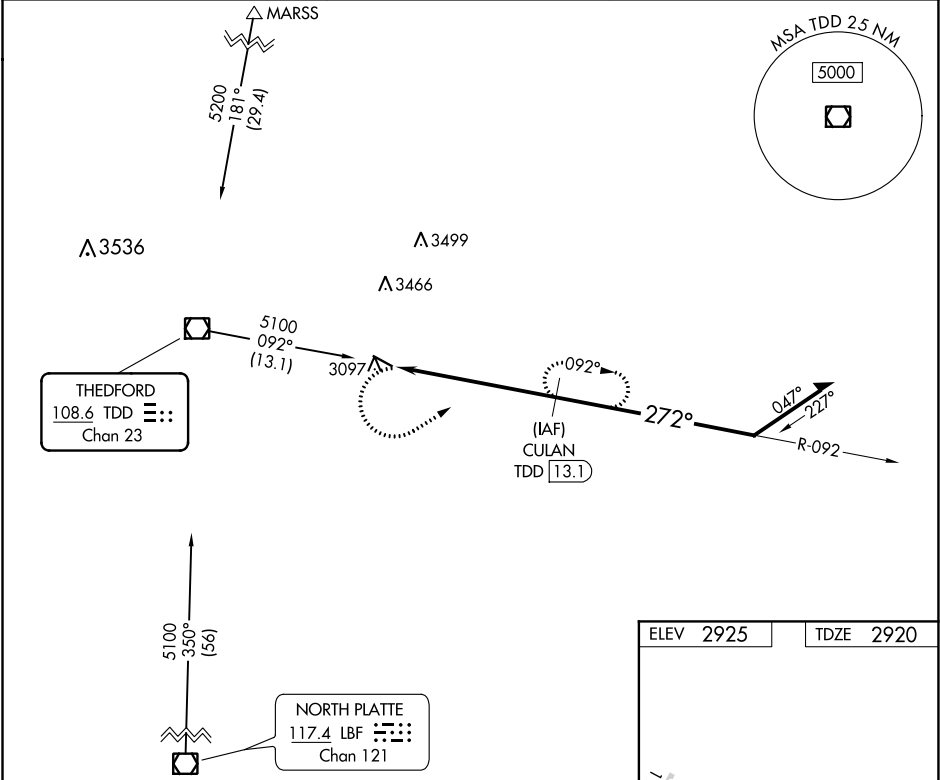


VOR/DME TDD <b>108.6</b> Chan <b>23</b>	APP CRS <b>272°</b>	Rwy Idg TDZE <b>2920</b> Apt Elev <b>2925</b>	VOR RWY 29 THOMAS COUNTY (TIF')
---	------------------------	---	------------------------------------

DME required.	MISSED APPROACH: Climbing left turn to 4900 on heading 049° and TDD R-092 to CULAN/TDD 13.1 DME and hold.
<div><div>V</div><div>NA</div></div> <div>Rwy 29 helicopter visibility reduction below ¾ SM NA. When local altimeter setting not received, use North Platte altimeter setting and increase all MDA 140 feet. VDP NA when using North Platte altimeter setting.</div>	

AWOS-3 <b>120.825</b>	DENVER CENTER <b>127.95 338.2</b>	CTAF <b>122.9</b>
--------------------------	--------------------------------------	----------------------



NC-2, 03 DEC 2020 to 31 DEC 2020

NC-2, 03 DEC 2020 to 31 DEC 2020