

WAAS CH 99539 W12A	APP CRS 124°	Rwy Idg TDZE Apt Elev	4600 3071 3071
--	------------------------	-----------------------------	---

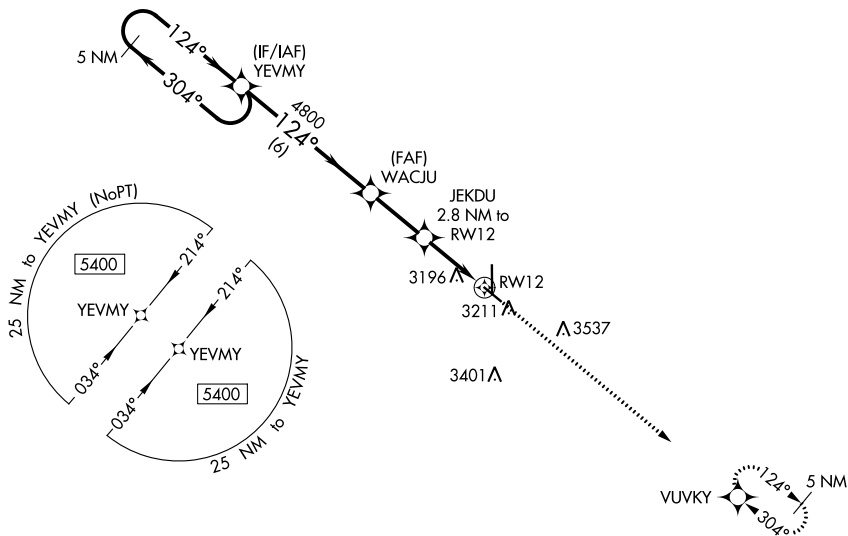
RNAV (GPS) RWY 12

ULYSSES (ULS)

V For uncompensated Baro-VNAV systems, LNAV/VNAV NA below -21°C (-5°F) or above
NA 54°C (130°F). DME/DME RNP-0.3 NA. When local altimeter setting not received, use
 Garden City altimeter setting and increase LPV DA to 3431, LNAV/VNAV DA to 3563, and
 all MDA 120 feet; increase visibility LPV ½ mile all Cats, LNAV/VNAV ½ mile all Cats, LNAV
 and Circling Cat C ½ mile. Baro-VNAV and VDP NA when using Garden City altimeter setting.

MISSED APPROACH:
Climb to 5400 direct
VUVKY and hold.

AWOS-3 118.95	KANSAS CITY CENTER 125.2 269.4	UNICOM 122.8 (CTAF) ①
-------------------------	--	---------------------------------

 $\Delta 3699 \pm$ 

NC-2, 03 DEC 2020 to 31 DEC 2020

ULYSSES, KANSAS

Amdt 2 15SEP16

37°36'N-101°22'W

ULYSSES (ULS)

RNAV (GPS) RWY 12