

APP CRS	Rwy Idg	4600
304°	TDZE	3063
	Apt Elev	3071

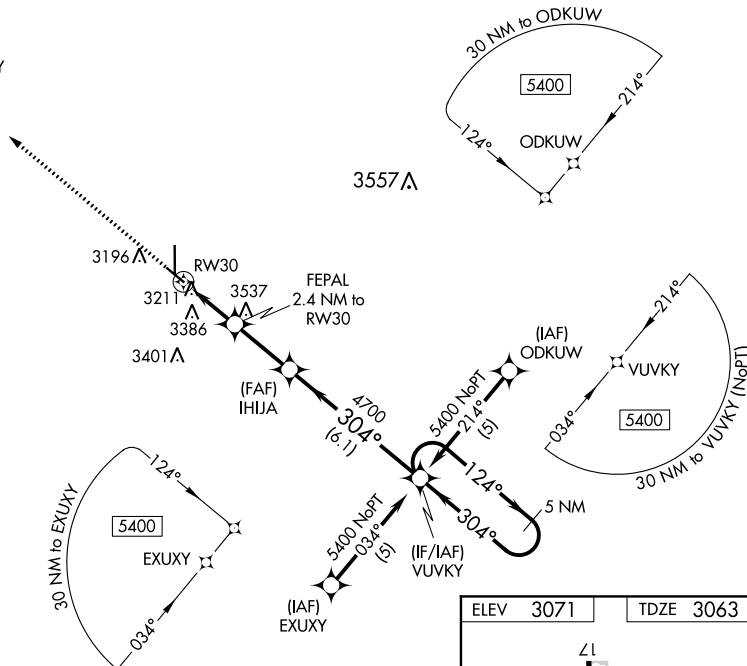
RNAV (GPS) RWY 30
ULYSSES (ULS)

V	DME/DME RNP-0.3 NA. Helicopter visibility reduction below $\frac{3}{4}$ SM NA.
A NA	VDP NA with Garden City altimeter setting. When local altimeter setting not received, use Garden City altimeter setting and increase all MDA 120 feet; increase visibility LNAV and Circling Cat C $\frac{1}{4}$ mile.

MISSED APPROACH: Climb to 5400
direct YEVMY and hold.

AWOS-3
118.95

KANSAS CITY CENTER
125.2 269.4

UNICOM
122.8 (CTAF) **L**

NC-2, 03 DEC 2020 to 31 DEC 2020

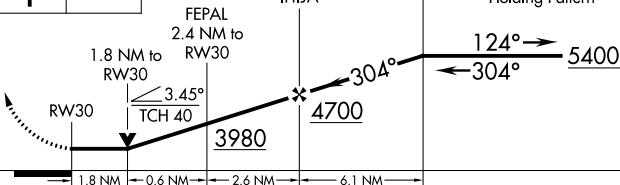
5400


YEVMY

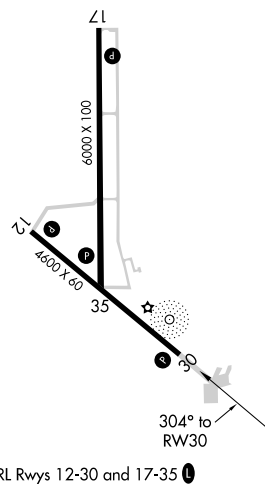
VGSI and descent angle not coincident
(VGSI Angle 3.00/TCH 35).

VUVKY

5 NM
Holding Pattern



CATEGORY	A	B	C	D
INAV MDA	3680-1	617 (700-1)	3680-1 $\frac{3}{4}$ 617 (700-1 $\frac{3}{4}$)	NA
 CIRCLING	3740-1	669 (700-1)	3900-2 $\frac{1}{2}$ 829 (900-2 $\frac{1}{2}$)	NA



ULYSSES, KANSAS
Amdt 1A 15SEP16

37°36'N-101°22'W

ULYSSES (ULS)
RNAV (GPS) RWY 30