

WAAS CH <b>93707</b> <b>W13A</b>	APP CRS <b>130°</b>	Rwy Idg TDZE <b>2503</b> Apt Elev <b>2503</b>
--	------------------------	---

RNAV (GPS) RWY 13

COZAD MUNI (CZD)

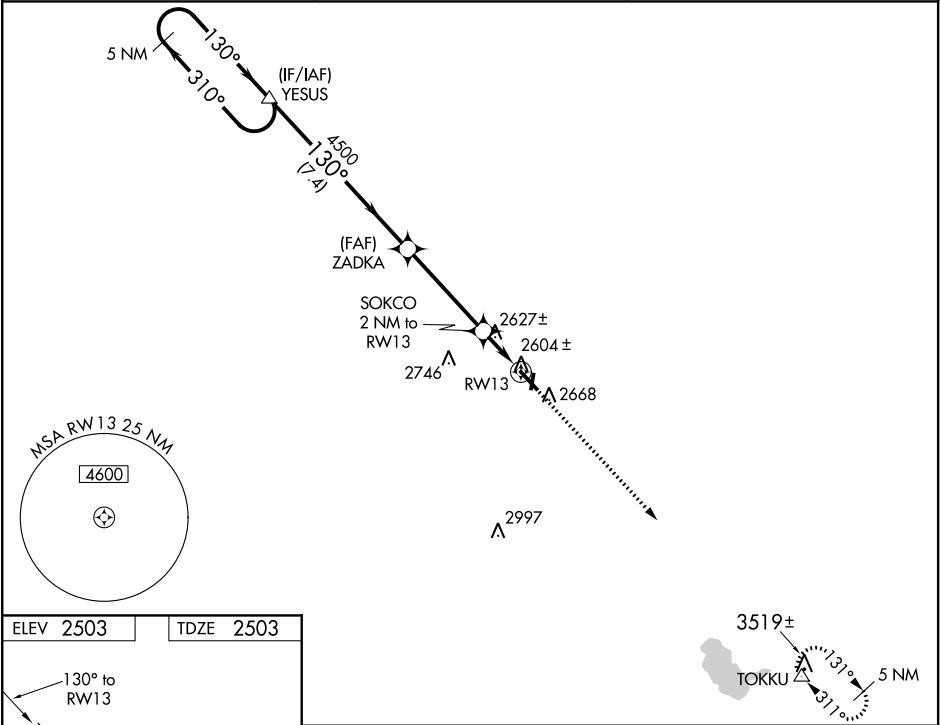
⚠

NA

Circling NA to Rwy 18 and 36. Baro-VNAV NA. DME/DME RNP-0.3 NA.  
Use Lexington altimeter setting; when not received, use North Platte altimeter setting and increase all DAs 79 feet and LPV and LNAV/VNAV visibility ¼ mile all Cats, increase all MDAs 80 feet and Circling Cat C visibility ¼ mile. Helicopter visibility reduction below ¾ SM NA.

MISSED APPROACH: Climb to 5500 direct TOKKU and hold.

LXN AWOS-3 <b>121.025</b>	DENVER CENTER <b>132.7 226.675</b>	UNICOM <b>122.8 (CTAF) 0</b>
------------------------------	---------------------------------------	---------------------------------



5 NM Holding Pattern YESUS					5500 TOKKU
5000 310° 130° 130° 4500 ZADKA SOKCO 2 NM to RW13 *3180 RW13					*LNAV only.
GP 3.00° TCH 52 7.4 NM 4 NM 2 NM					
CATEGORY	A	B	C	D	
LPV DA	2875-1¼		372 (400-1¼)		NA
LNAV/VNAV DA	2913-1½		410 (500-1½)		NA
LNAV MDA	2920-1		417 (500-1)		NA
CIRCLING	3080-1		577 (600-1)		NA