

VOR OZB <b>109.0</b>	APP CRS <b>123°</b>	Rwy Idg TDZE Apt Elev	<b>5000</b> <b>2502</b> <b>2502</b>
-------------------------	------------------------	-----------------------------	-------------------------------------------

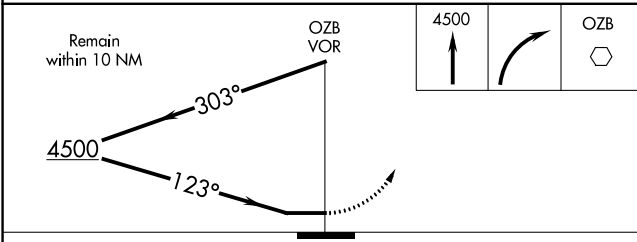
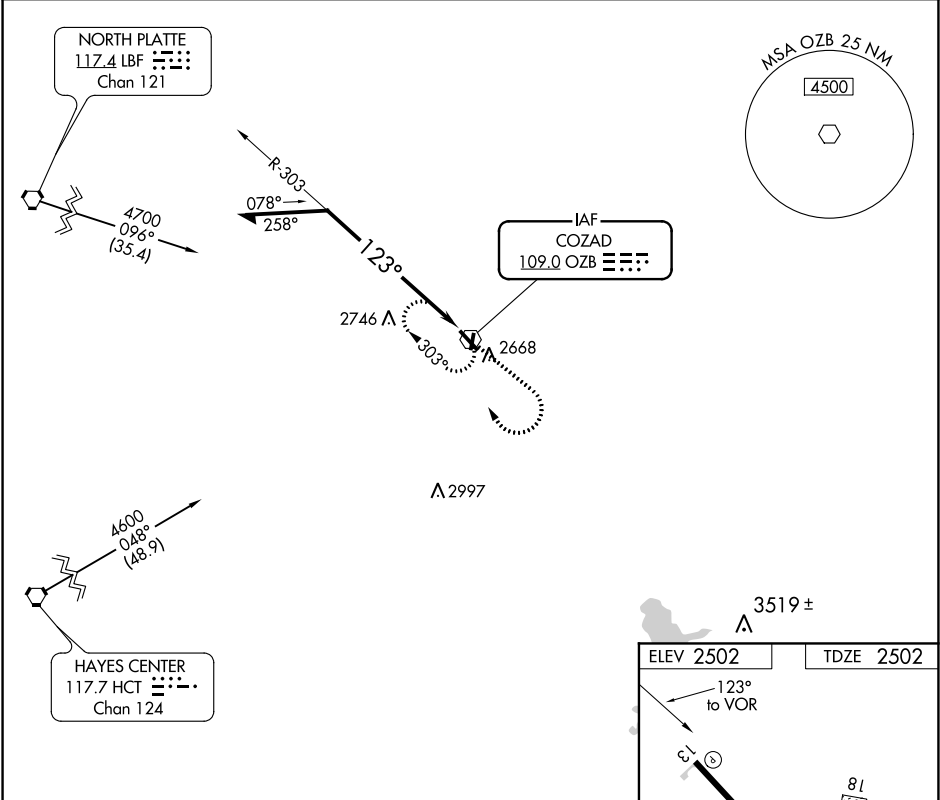
VOR RWY 13  
COZAD MUNI (CZD)

**▼** Use Lexington altimeter setting; when not received, use North Platte altimeter setting and increase all MDAs 80 feet; increase Circling Cat C visibility ¼ SM. Circling NA to Rwys 18 and 36. Rwy 13 helicopter visibility reduction below ¾ SM NA.

**▲ NA**

MISSED APPROACH: Climb to 4500 then right turn direct OZB VOR and hold.

LXN AWOS-3 <b>121.025</b>	DENVER CENTER <b>132.7 226.675</b>	UNICOM <b>122.8 (CTAF) 0</b>
------------------------------	---------------------------------------	---------------------------------



CATEGORY	A	B	C	D
S-13	3140-1	638 (700-1)	3140-1¾ 638 (700-1¾)	NA
<b>C</b> CIRCLING	3140-1	638 (700-1)	3140-1¾ 638 (700-1¾)	NA

MIRL Rwy 13-31 0