

RNP APCH.

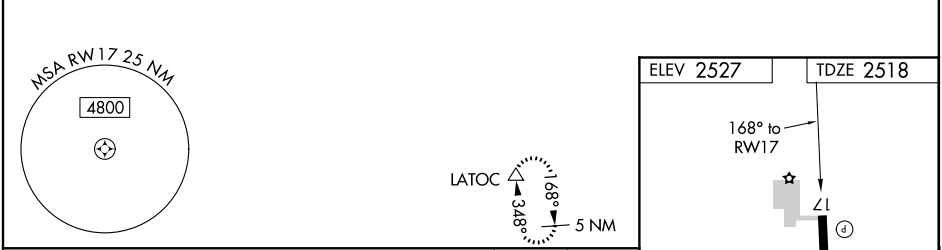
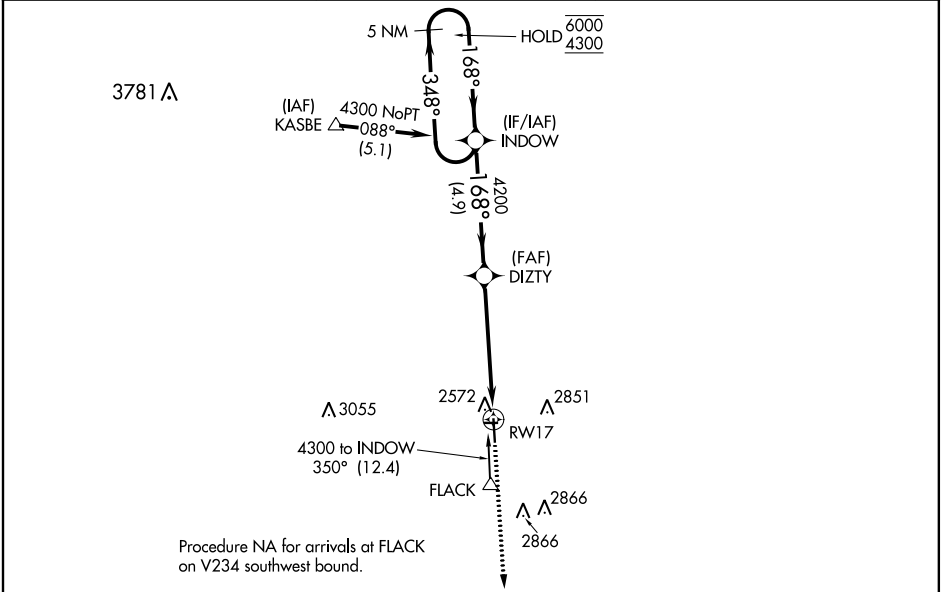
▼

▲ NA

Circling NA to Rwy 8 and 26. Rwy 17 helicopter visibility reduction below 1 SM NA. When local altimeter setting not received, use Liberal altimeter setting and increase all MDAs 140 feet.

MISSED APPROACH: Climb to 4300 direct LATOC and hold.

AWOS-3 119.425	KANSAS CITY CENTER 134.0 257.625	UNICOM 122.8 (CTAF) 0
-------------------	-------------------------------------	--------------------------



5 NM Holding Pattern

Visual Segment - Obstacles.

INDOW

DIZTY

RW17

4300

LATOC

6000

4300

348°

168°

168°

4200

4.9 NM

5.2 NM

CATEGORY	A	B	C	D
LNAV MDA	3100-1	582 (600-1)	NA	
CIRCLING	3100-1	573 (600-1)	NA	

ELEV 2527

TDZE 2518

168° to RWY 17

2085 X 85

0.8% UP

4800 X 75

0.3% UP

35

MIRL Rwy 17-35 0