

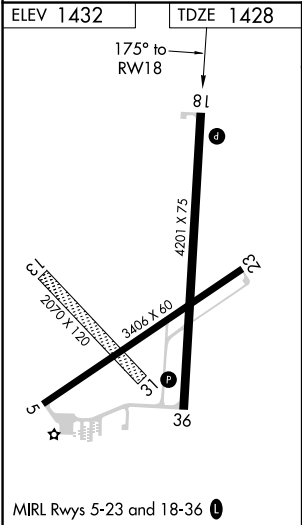
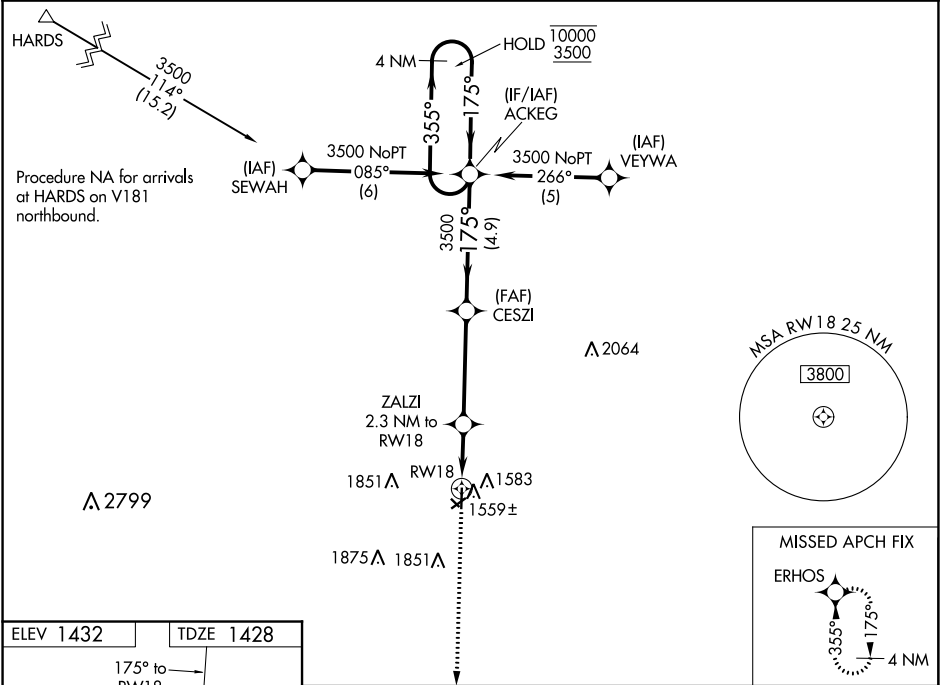
WAAS CH <b>77513</b> <b>W18A</b>	APP CRS <b>175°</b>	Rwy Idg TDZE <b>1428</b> Apt Elev <b>1432</b>
--	------------------------	---

RNAV (GPS) RWY 18

WAYNE MUNI/STAN MORRIS FIELD (L/G)

RNP APCH. ▼ Circling NA to Rwy 13 and 31. For uncompensated Baro-VNAV systems, LNAV/VNAV NA below -17°C or above 54°C. ▲	MISSED APPROACH: Climb to 3500 direct ERHOS and hold.
--	---

AWOS-3 <b>120.125</b>	SIoux CITY APP CON ★ <b>124.6 307.0</b>	UNICOM <b>122.8 (CTAF) 0</b>
--------------------------	--	---------------------------------



3500	ERHOS	CESZI	ACKEG	4 NM Holding Pattern
*LNAV only	ZALZI 2.3 NM to RW18	3500	175° 355° 10000 3500	
	*1.1 NM to RW18	2200*	175° 3500	GP 3.00° TCH 41
	1.1 NM 1.2 NM	4.1 NM 4.9 NM		
CATEGORY	A	B	C	D
LPV DA	1678-1	250 (300-1)		NA
LNAV/VNAV DA	1678-1	250 (300-1)		NA
LNAV MDA	1820-1	392 (400-1)		NA
CIRCLING	2000-1	568 (600-1)		NA