

WAAS CH 82523 W23A	APP CRS 228°	Rwy Idg TDZE 1430 Apt Elev 1432
----------------------------------------	------------------------	-----------------------------------------------------

RNAV (GPS) RWY 23

WAYNE MUNI/STAN MORRIS FIELD (LCG)

RNP APCH.

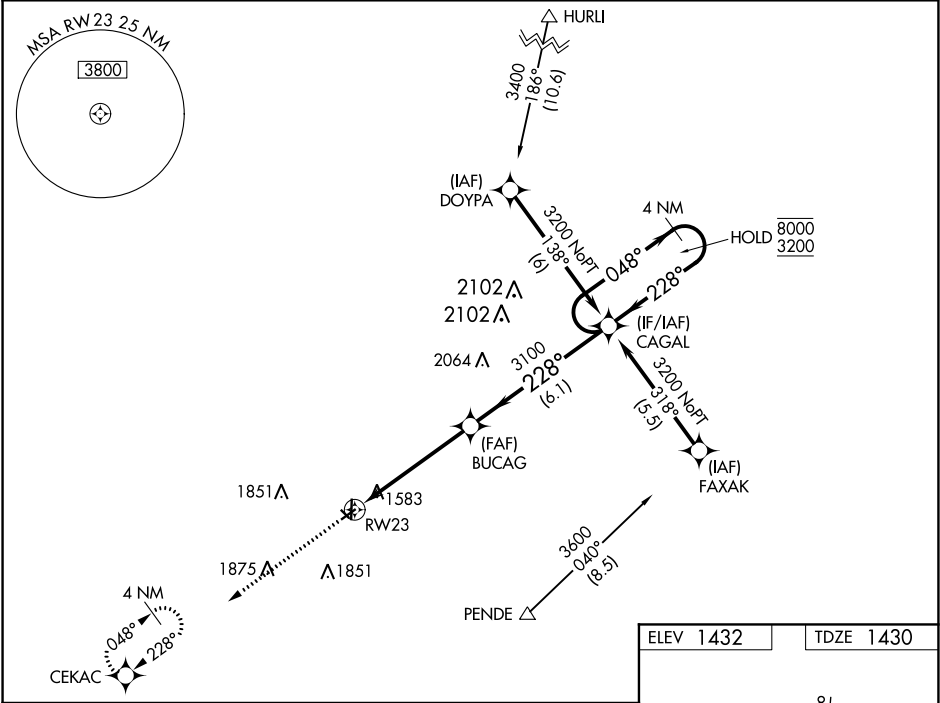
▼

⚠

Circling NA to Rwy 13 and 31. Rwy 23 helicopter visibility reduction below ¾ SM NA. For uncompensated Baro-VNAV systems, LNAV/VNAV NA below -17°C or above 54°C.

MISSED APPROACH: Climb to 3400 direct CEKAC and hold.

AWOS-3 120.125	SIOUX CITY APP CON ★ 124.6 307.0	UNICOM 122.8 (CTAF) ①
--------------------------	--------------------------------------------	---------------------------------



3400	CEKAC				
*LNAV only	*1.5 NM to RW23	BUCAG	CAGAL	4 NM Holding Pattern	
		3100	228°	048°	8000
			3100	228°	3200
	1.5 NM	3.6 NM	6.1 NM		GP 3.00° TCH 40
CATEGORY	A	B	C	D	
LPV DA	1866-1½	436 (500-1½)		NA	
LNAV/VNAV DA	1869-1½	439 (500-1½)		NA	
LNAV MDA	1940-1	510 (600-1)		NA	
CIRCLING	2000-1	568 (600-1)		NA	

