

WAAS

CH **45938**

**W15A**

APP CRS

**150°**

Rwy Idg

**4098**

TDZE

**2414**

Apt Elev

**2414**

**RNAV (GPS) RWY 15**

CAMBRIDGE MUNI (CSB)

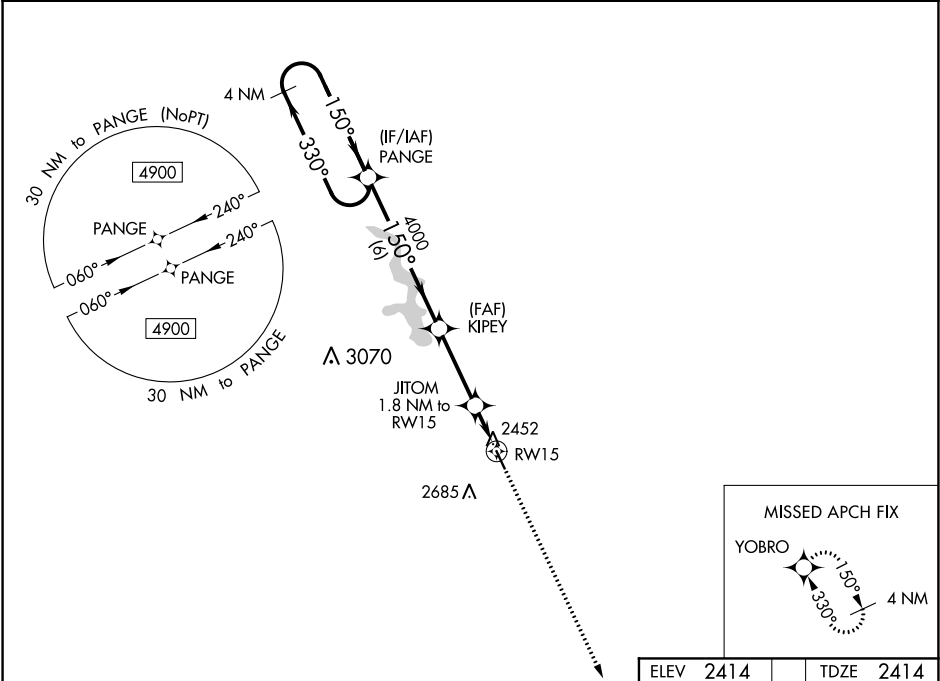
▼

NA

Baro-VNAV NA. DME/DME RNP-0.3 NA. Use Mc Cook altimeter setting when not received, use Lexington altimeter setting and increase LPV and LNAV/VNAV DA to 2743, increase all MDA 20 feet.

MISSED APPROACH: Climb to 4500 direct YOBRO and hold.

DENVER CENTER <b>132.7 226.675</b>	UNICOM <b>122.8 (CTAF) 0</b>
---------------------------------------	---------------------------------



4 NM Holding Pattern

PANGA

4900 ← 330°

150° →

GP 3.00° TCH 40

KIPEY 4000

JIOM 1.8 NM to RW15

RW15

\*3020

6 NM

3.1 NM

1.8 NM

4500

YOBRO

\* LNAV only

CATEGORY	A	B	C	D
LPV DA	2736-1½	322 (400-1½)		NA
LNAV/VNAV DA	2736-1½	322 (400-1½)		NA
LNAV MDA	2780-1	366 (400-1)		NA
CIRCLING	2920-1 506 (600-1)	3120-1 706 (800-1)	3120-2 706 (800-2)	NA

ELEV 2414

TDZE 2414

150° to RW15

4098 X 60

0.43 UP

MIRL Rwy 15-33 0