

WAAS CH <b>63107</b> <b>W17A</b>	APP CRS <b>175°</b>	Rwy Idg <b>4201</b> TDZE <b>1500</b> Apt Elev <b>1500</b>
--	------------------------	---

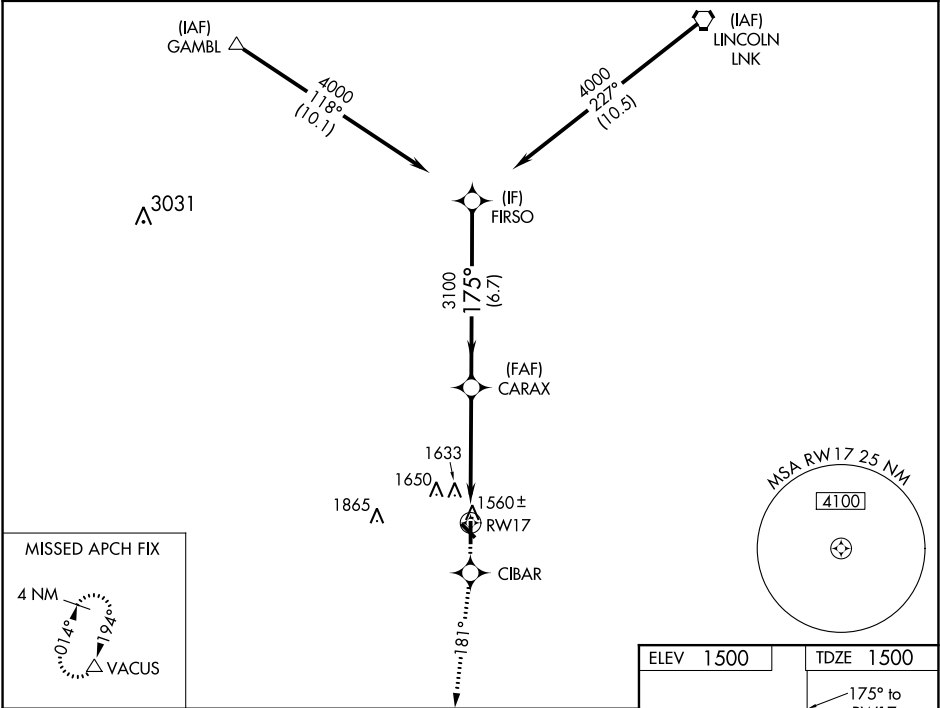
RNAV (GPS) RWY 17  
CRETE MUNI (CEK)

**V** Baro-VNAV NA. DME/DME RNP-0.3 NA. Visibility reduction by helicopters NA. Use Lincoln altimeter setting; when not received, use Beatrice altimeter setting.

**Δ** NA

MISSED APPROACH: Climb to 4000 direct CIBAR and via 181° track to VACUS and hold, continue climb-in-hold to 4000.

OMAHA APP CON <b>124.0 270.3</b>	UNICOM <b>122.8</b> (CTAF)
-------------------------------------	-------------------------------



4000	CIBAR	tr 181°	VACUS	VGSI and RNAV glidepath not coincident.
				FIRSO
				CARAX
				RW17
				3100
				175°
				4000
				Procedure Turn NA
				GP 3.00°
				TCH 40
				4.8 NM
				6.7 NM
CATEGORY	A	B	C	D
LPV DA	1875-1¼	375 (400-1¼)	NA	NA
RNAV/VNAV DA	2051-2	551 (600-2)	NA	NA
RNAV MDA	2080-1	580 (600-1)	NA	NA
CIRCLING	2140-1	640 (700-1)	NA	NA

