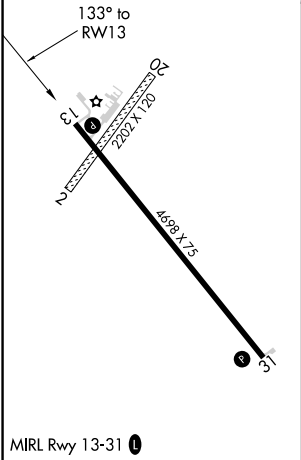
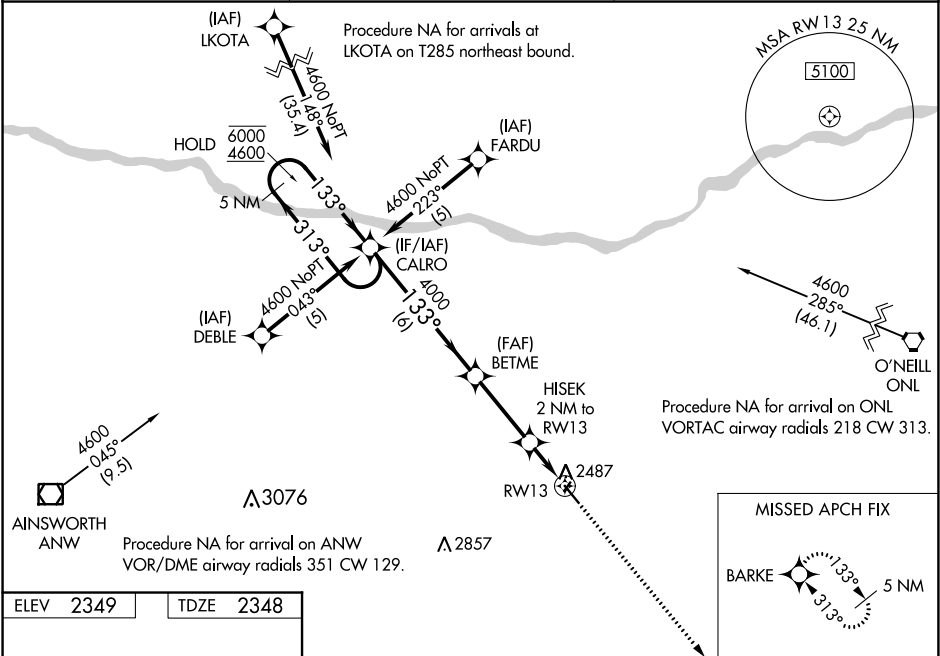


WAAS CH 86817 W13A	APP CRS 133°	Rwy Idg TDZE Apt Elev	4698 2348 2349
--	------------------------	-----------------------------	---

RNAV (GPS) RWY 13
ROCK COUNTY (RBE)

RNP APCH.	<p>⚠ NA</p> <p>Circling NA to Rwy 2 and 20. Rwy 13 helicopter visibility reduction below 1 SM NA. Baro-VNAV NA. Use Ainsworth altimeter setting; when not received, use O'Neill altimeter setting and increase LPV DA to 2778 feet and visibility ¼ SM, LNAV/VNAV DA to 2815 feet and visibility ¼ SM; increase all MDAs 60 feet. Straight-in Rwy 13 NA at night, Circling Rwy 13 NA at night.</p>	MISSED APPROACH: Climb to 5100 direct BARKE and hold.
-----------	--	--

ANW AWOS-3 118.325	DENVER CENTER 127.95 338.2	CTAF 122.90
------------------------------	--------------------------------------	-----------------------



ELEV 2349		TDZE 2348	
5 NM Holding Pattern		CALRO	
6000 ← 313°		BETME	
4600 → 133°		HISEK 2 NM to RWY 13	
GP 3.00°		RWY 13	
TCH 40		*3020	
		6 NM	
		3.1 NM	
		2 NM	
CATEGORY	A	B	C
LPV DA	2723-1	375 (400-1)	NA
LNAV/VNAV DA	2760-1 ⅛	412 (500-1 ⅛)	NA
LNAV MDA	2880-1	532 (600-1)	NA
CIRCLING	2920-1	571 (600-1)	NA

NC-2, 03 DEC 2020 to 31 DEC 2020

NC-2, 03 DEC 2020 to 31 DEC 2020