

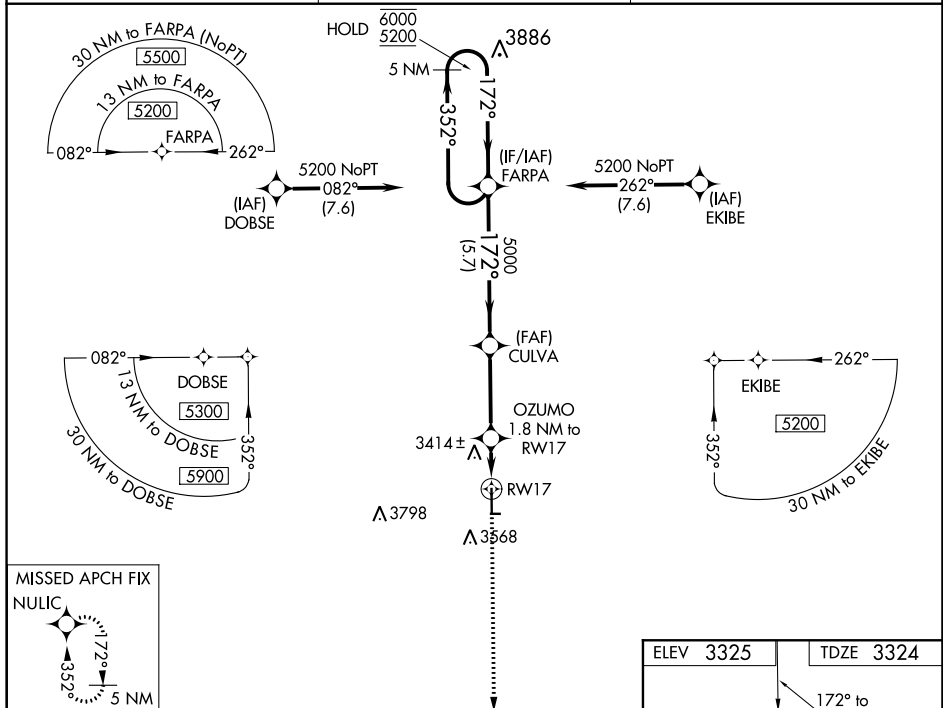


WAAS CH 90243 W17A	APP CRS 172°	Rwy Idg 5200 TDZE 3324 Apt Elev 3325
--	------------------------	---

RNAV (GPS) RWY 17
STANTON COUNTY MUNI (JHN)

RNP APCH.		MISSED APPROACH: Climb to 5200 direct NULIC and hold.
 Circling Rwy 8, 26 NA at night. For uncompensated Baro-VNAV systems, LNAV/VNAV NA below -21°C or above 54°C.		
AWOS-3P 124.175	KANSAS CITY CENTER 125.2 269.4	UNICOM 122.8 (CTAF) 



5 NM Holding Pattern

FARPA

CULVA 5000

OZUMO 1.8 NM to RW17

RW17

5200

NULIC

*LNAV only.

GP 3.00° TCH 40

6000

5200

352°

172°

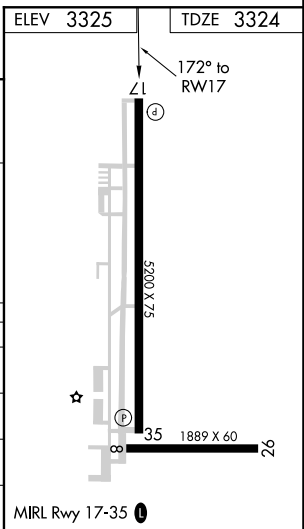
172°

3940°

5000

*1 NM to RW17

CATEGORY		A		B		C		D	
LPV	DA	3524-1		200 (200-1)					
LNAV/ VNAV	DA	3574-1		250 (300-1)					
LNAV	MDA	3680-1		356 (400-1)					
C CIRCLING		3880-1	555 (600-1)	4040-2 715 (800-2)		4040-2¼ 715 (800-2¼)			



NC-2, 03 DEC 2020 to 31 DEC 2020