

| | | | |
|--|------------------------|-----------------------------|---|
| WAAS CH 56334 W15A | APP CRS 154° | Rwy Idg TDZE Apt Elev | 4200 1378 1379 |
|--|------------------------|-----------------------------|---|

RNAV (GPS) RWY 15

EL DORADO/CAPTAIN JACK THOMAS MEMORIAL (EQA)

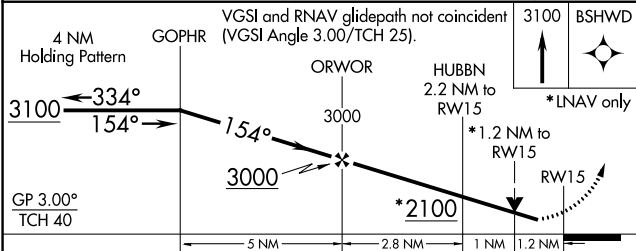
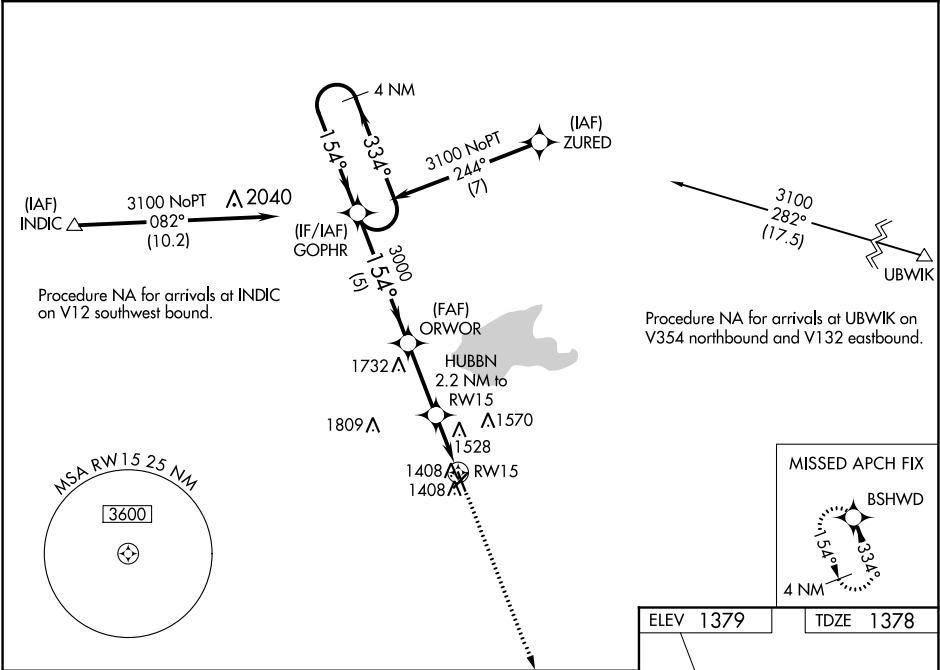
⚠

NA

For uncompensated Baro-VNAV systems, LNAV/VNAV NA below -17°C (2°F) or above 54°C (130°F). DME/DME RNP-0.3 NA. Helicopter visibility reduction below ¾ SM NA. When local altimeter setting not received, use Colonel James Jabara altimeter setting and increase all DA 51 feet and all MDA 60 feet; increase LNAV/VNAV all Cats visibility ½ mile. Baro-VNAV and VDP NA when using Colonel James Jabara altimeter setting.

MISSED APPROACH:
Climb to 3100 direct BSHWD and hold.

| | | |
|---------------------------|---------------------------------------|---------------------------------|
| AWOS-3P 120.875 | WICHITA APP CON 134.8 269.1 | UNICOM 122.8 (CTAF) 0 |
|---------------------------|---------------------------------------|---------------------------------|



| CATEGORY | A | B | C | D |
|--------------|-----------------------|-----------------------|---|----|
| LPV DA | 1628-1 | 250 (300-1) | | NA |
| LNAV/VNAV DA | 1843-1½ | 465 (500-1½) | | NA |
| LNAV MDA | 1780-1 | 402 (500-1) | | NA |
| CIRCLING | 1820-1 441 (500-1) | 1960-1 581 (600-1) | | NA |

