

WAAS CH 93804 W18A	APP CRS 176°	Rwy Idg 5201 TDZE 1277 Apt Elev 1277
----------------------------------------	------------------------	-----------------------------------------------------------------

RNAV (GPS) RWY 18
WELLINGTON MUNI (EGT)

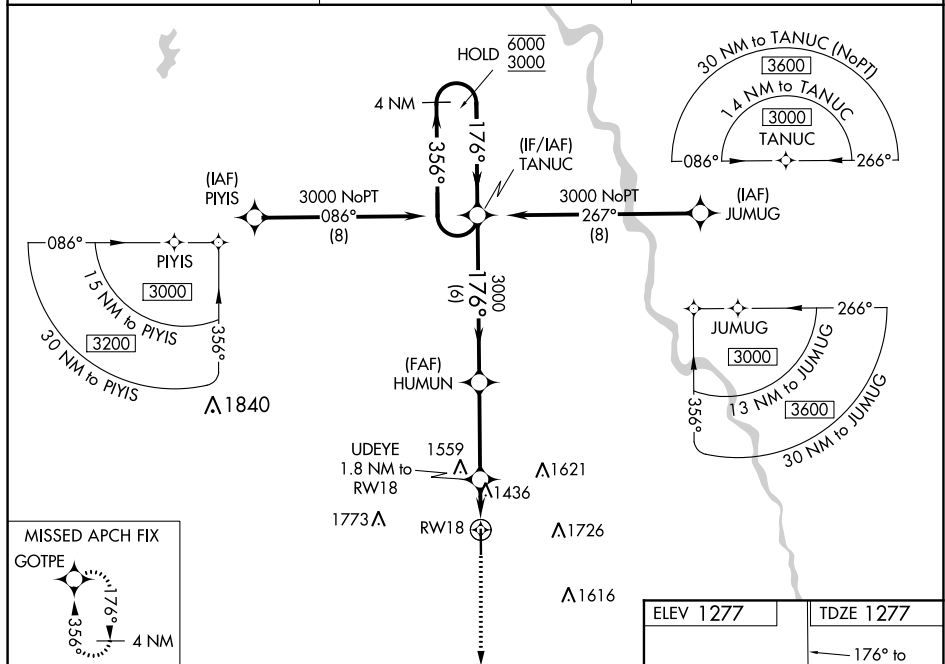
RNP APCH.

T Baro-VNAV and VDP NA when using Wichita Dwight D Eisenhower National altimeter setting. For uncompensated Baro-VNAV systems, LNAV/VNAV NA below -17°C or above 54°C.

A NA When local altimeter setting not received, use Wichita Dwight D Eisenhower National altimeter setting: increase LPV DA to 1531 feet; increase LNAV/VNAV DA to 1776 feet; increase all MDAs: 60 feet and LNAV Cats C/D visibility $\frac{1}{8}$ SM and Circling Cats C/D visibility $\frac{1}{4}$ SM.

MISSED APPROACH:
Climb to 3000 direct
GOTPE and hold.

AWOS-3 118.875	WICHITA APP CON 134.85	UNICOM 122.8 (CTAF) 0
--------------------------	----------------------------------	----------------------------------------



4 NM Holding Pattern

TANUC

HUMUN

3000

3000

3000

356°

176°

176°

GP 3.00°

TCH 40

6 NM

3.5 NM

0.6

1.2 NM

UDEYE

1.8 NM to RW18

*1.2 NM to RW18

*1880

RW18

3000

GOTPE

*LNAV only.

CATEGORY	A	B	C	D
LPV DA	1477-1		200 (200-1)	
LNAV/VNAV DA	1722-1 $\frac{3}{8}$		445 (500-1 $\frac{3}{8}$)	
LNAV MDA	1700-1	423 (500-1)	1700-1 $\frac{1}{4}$	423 (500-1 $\frac{1}{4}$)
C CIRCLING	1760-1	483 (500-1)	2040-2 $\frac{1}{4}$ 763 (800-2 $\frac{1}{4}$)	2140-2 $\frac{3}{4}$ 863 (900-2 $\frac{3}{4}$)

The diagram shows a vertical runway labeled 'HIRL Rwy 18-36' at the bottom and 'REIL Rwys 18 and 36' at the bottom. The runway is a thick black line. To the right of the runway, there are several taxiway segments. A dimension line indicates a length of '5201 X 100' for a section of the taxiway. A star symbol is located on one of the taxiway segments. At the top of the diagram, there is a horizontal line labeled 'ELEV 1277' on the left and 'TDZE 1277' on the right. An arrow points from the text '176° to RW18' to the top of the runway.