

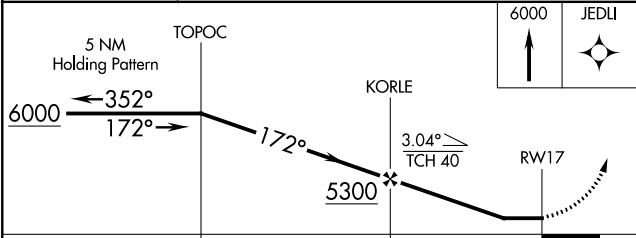
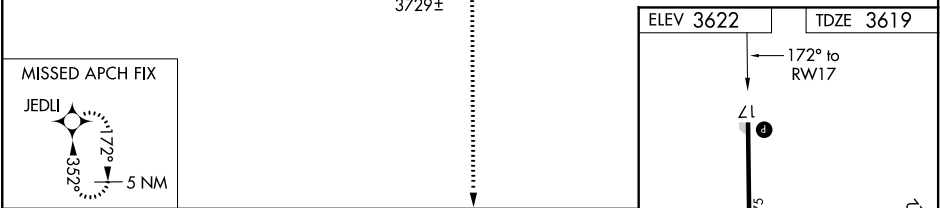
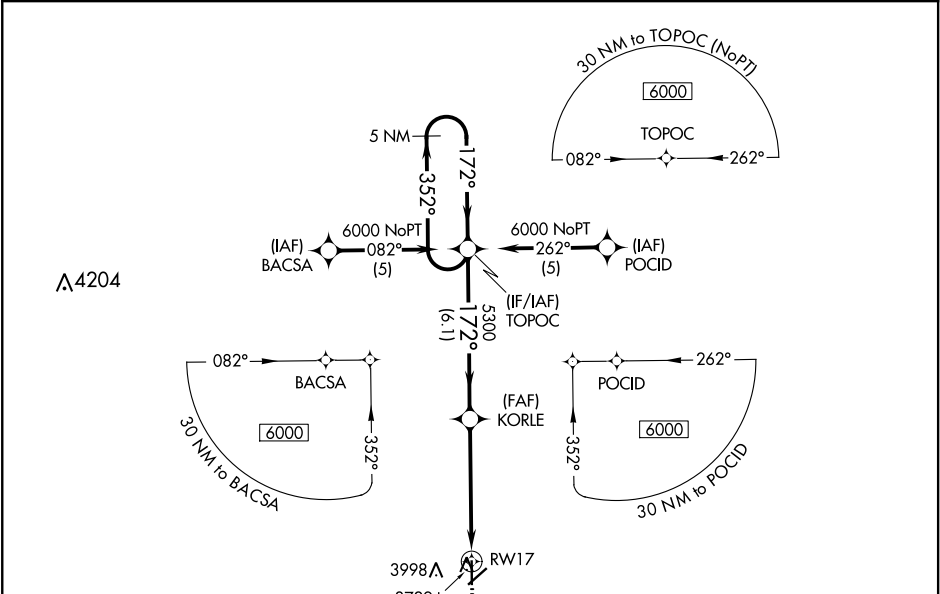
APP CRS	Rwy ldg	4907
172°	TDZE	3619
	Apt Elev	3622

RNAV (GPS) RWY 17

ELKHART-MORTON COUNTY (EHA)

RNP APCH.	MISSED APPROACH: Climb to 6000 direct JEDLI and hold.
<div><div><div>▼</div><div>Procedure NA at night. Rwy 17 helicopter visibility reduction below 1 SM NA.</div></div><div><div>⚠</div><div>When local altimeter setting not received, use Liberal altimeter setting and increase all MDA 220 feet, increase LNAV Cat B visibility ¼ SM and LNAV Cat C visibility ¾ SM.</div></div></div>	

AWOS-3PT 118.025	KANSAS CITY CENTER 134.0 290.8	UNICOM 122.8 (CTAF) 0
---------------------	-----------------------------------	--------------------------



CATEGORY	A	B	C	D
LNAV MDA	4240-1	621 (700-1)	4240-1¾ 621 (700-1¾)	NA

