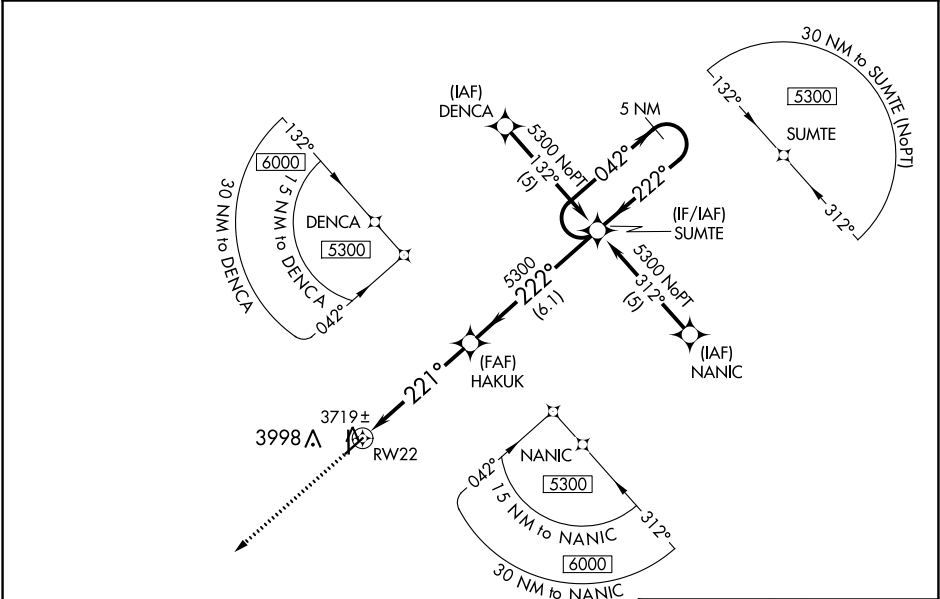


APP CRS	Rwy Idg	4900
221°	TDZE	3614
	Apt Elev	3622

RNAV (GPS) RWY 22
ELKHART-MORTON COUNTY (EHA)

RNP APCH. ▼ Procedure NA at night. Rwy 22 helicopter visibility reduction below 1 SM NA. ▲ VDP NA when using Liberal altimeter setting. When local altimeter setting not received, use Liberal altimeter setting and increase all MDA 220 feet, increase LNAV Cat C visibility ¾ SM.		MISSED APPROACH: Climb to 6000 direct RIGGO and hold.
AWOS-3PT 118.025	KANSAS CITY CENTER 134.0 290.8	UNICOM 122.8 (CTAF) 0



ELEV 3622		TDZE 3614	
6000		RIGGO	
RW22		HAKUK	
5.2 NM		6.1 NM	
A		B	
LNAV MDA		4100-1 486 (500-1)	
C		D	
4100-1¼ 486 (500-1¼)		NA	
MIRL Rwy 17-35 and 4-22		5 NM Holding Pattern	

NC-2, 03 DEC 2020 to 31 DEC 2020

NC-2, 03 DEC 2020 to 31 DEC 2020