

WAAS CH 50417 W35A	APP CRS 352°	Rwy Idg 4907 TDZE 3619 Apt Elev 3622
--	------------------------	---

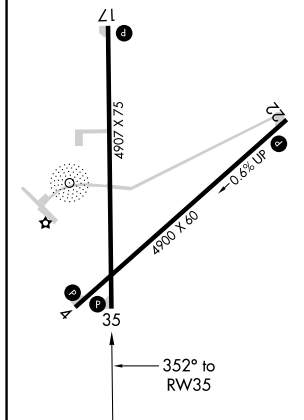
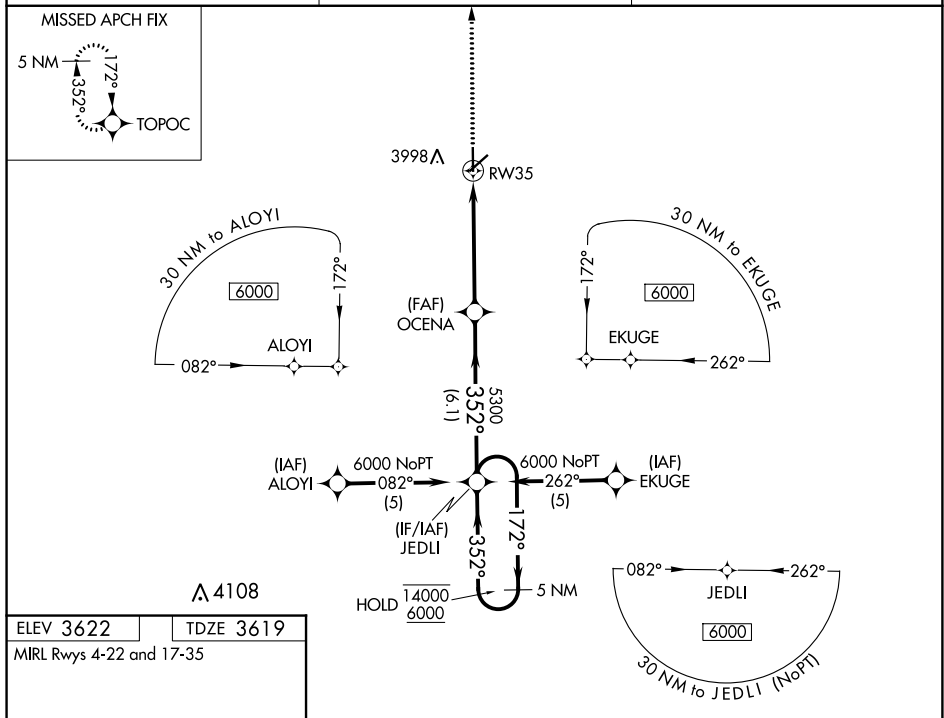
RNAV (GPS) RWY 35
ELKHART-MORTON COUNTY (EHA)

RNP APCH.



MISSED APPROACH: Climb to 6000
direct TOPOC and hold.

AWOS-3PT 118.025	KANSAS CITY CENTER 134.0 290.8	UNICOM 122.8 (CTAF) 0
----------------------------	--	---------------------------------



6000
↑
TOPOC

* RNAV only.

RW35

OCENA 5300

JEDLI

5 NM Holding Pattern

172° → 14000
← 352° 6000

GP 3.00°
TCH 44

CATEGORY	A	B	C	D
LPV DA	3869-1	250 (300-1)		NA
RNAV/VNAV DA	4167-2	548 (600-2)		NA
RNAV MDA	4280-1	661 (700-1)	4280-1 7/8 661 (700-1 7/8)	NA