

WAAS CH 82407 W34A	APP CRS 348°	Rwy Idg 4200 TDZE 1506 Apt Elev 1506
--	------------------------	---

Rwy Idg	4200
TDZE	1506
Apt Elev	1506

Rwy Idg	4200
TDZE	1506
Apt Elev	1506

RNAV (GPS) RWY 34
SEWARD MUNI (SWT)

SEWARD MUNI (SWT)

RNP APCH.

T Baro-VNAV NA. Use Lincoln altimeter setting. Circling NA to Rwy 4 and 22.
A NA Rwy 34 helicopter visibility reduction below $\frac{3}{4}$ SM NA.

MISSED APPROACH: Climb to 3300
direct APIKY and hold.

LNK ASOS
18.05 290.9

OMAHA APP CON
124.0 270.3

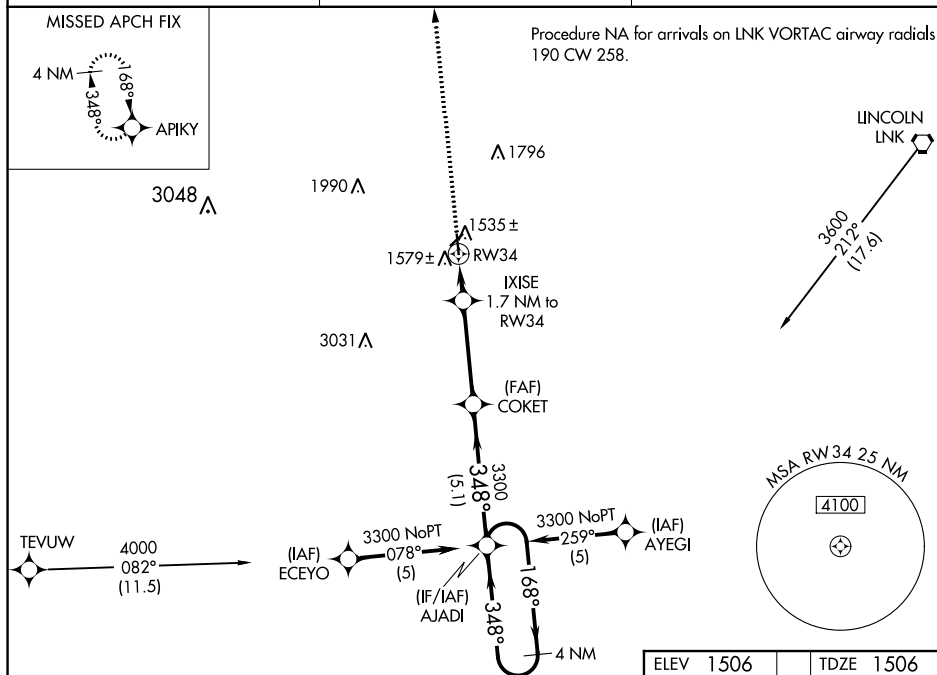
UNICOM
122.8 (CTAF) **L**

Diagram illustrating the 3300 VORTAC station and its associated navigation aids. The diagram shows the 3300 VORTAC station (a circle with a dot) and the APIKY station (a circle with a cross). The 3300 VORTAC station is located 1.7 NM from the RW34 runway. The APIKY station is located 1.7 NM from the RW34 runway. The diagram also shows the 3300 VORTAC station's coverage area, which includes the 3300 VORTAC station and the APIKY station. The diagram includes a table with the following information:

CATEGORY	A	B	C	D
LPV DA	1833-1 327 (400-1 1/4)			NA
LNAV/VNAV DA	1926-1 1/2 420 (500-1 1/2)			NA
LNAV MDA	1960-1 454 (500-1)			NA
CIRCLING	2020-1 514 (600-1)			NA

