

WAAS CH <b>81908</b> <b>W15A</b>	APP CRS <b>137°</b>	Rwy Idg <b>4797</b> TDZE <b>3423</b> Apt Elev <b>3425</b>
--	------------------------	---

RNAV (GPS) RWY 15

GRANT MUNI (GGF')

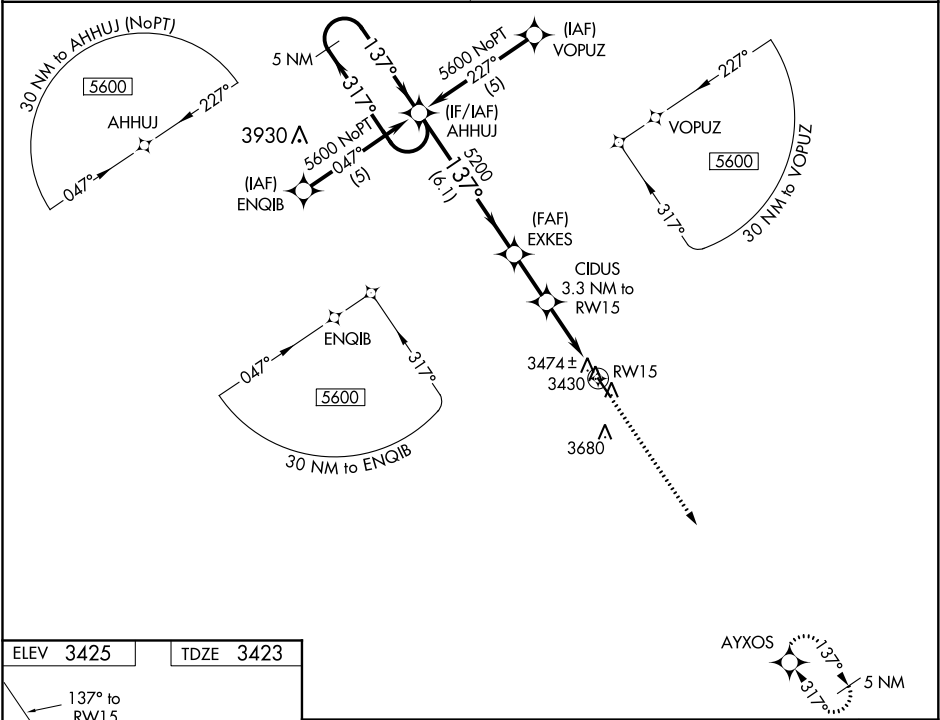
⚠

NA

For uncompensated Baro-VNAV systems, LNAV/VNAV NA below -21°C (-5°F) or above 54°C (130°F). DME/DME RNP-0.3 NA. When local altimeter setting not received, use Ogallala altimeter setting and increase all DA/MDA 60 feet and LNAV/VNAV all Cats visibility ¼ mile. VDP and Baro-VNAV NA when using Ogallala altimeter setting.

MISSED APPROACH:  
Climb to 5600 direct  
AYXOS and hold.

DENVER CENTER <b>132.7 397.85</b>	UNICOM <b>122.8 (CTAF) 0</b>
--------------------------------------	---------------------------------



ELEV **3425**

TDZE **3423**

137° to RW15

GP 3.00°

TCH 40

4797 A 60

33

MIRL Rwy 15-33 0

5 NM Holding Pattern				5600 AYXOS	
5600 ← 317° 137° →				*LNAV only.	
GP 3.00° TCH 40				*0.9 NM to RW15	
5200 EXKES				RW15	
CIDUS 3.3 NM to RW15				RW15	
*4520				RW15	
6.1 NM				2.1 NM	
2.4 NM				0.9 NM	
CATEGORY	A	B	C	D	
LPV DA	3673-1	250 (300-1)	NA		
LNAV/VNAV DA	3833-1½	410 (500-1½)	NA		
LNAV MDA	3740-1	317 (400-1)	NA		
CIRCLING	3900-1 475 (500-1)	3980-1 555 (600-1)	NA		