

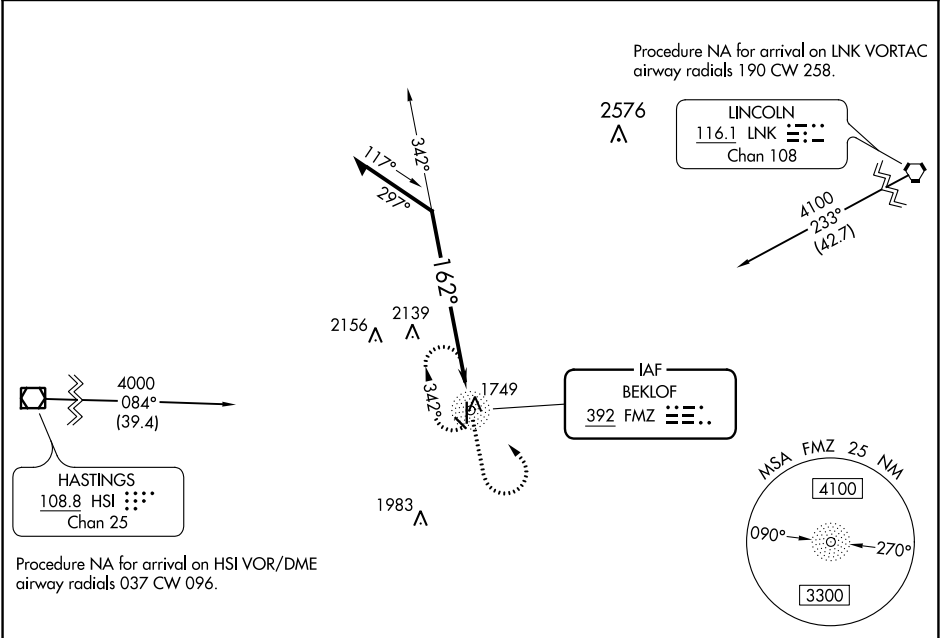
NDB FMZ	APP CRS	Rwy Idg
392	162°	4317
		TDZE 1636
		Apt Elev 1636

NDB RWY 17
FAIRMONT STATE AIRFIELD (F'MZ)

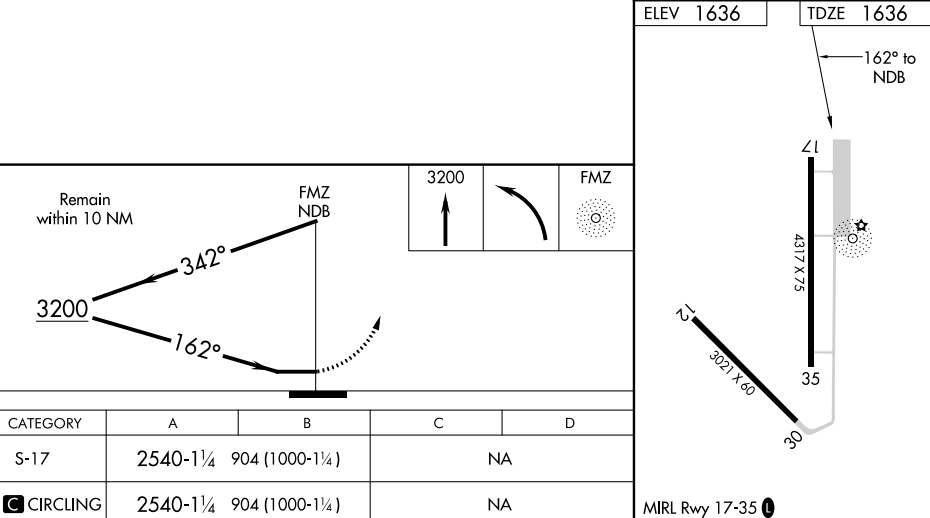
**NA** Circling Rwy 12, 30 NA at night.
Use York altimeter setting, when not received use Hebron altimeter setting and increase all MDA 40 feet.

MISSED APPROACH: Climb to 3200 then left turn direct FMZ NDB and hold.

JYR AWOS-3 124.175	MINNEAPOLIS CENTER 119.4 278.8	CTAF 122.9
------------------------------	--	----------------------



ELEV 1636	TDZE 1636
-----------	-----------



Remain within 10 NM

FMZ NDB

3200

342°

162°

3200

35

30

3221 X 60

4317 X 75

162° to NDB

MIRL Rwy 17-35

CATEGORY	A	B	C	D
S-17	2540-1¼	904 (1000-1¼)	NA	
CIRCLING	2540-1¼	904 (1000-1¼)	NA	

NC-2, 03 DEC 2020 to 31 DEC 2020

NC-2, 03 DEC 2020 to 31 DEC 2020