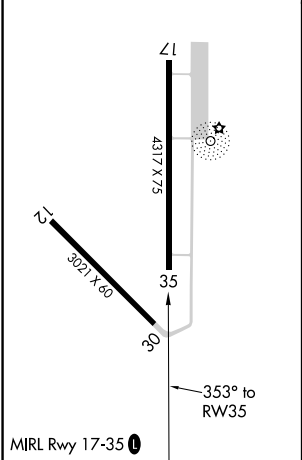
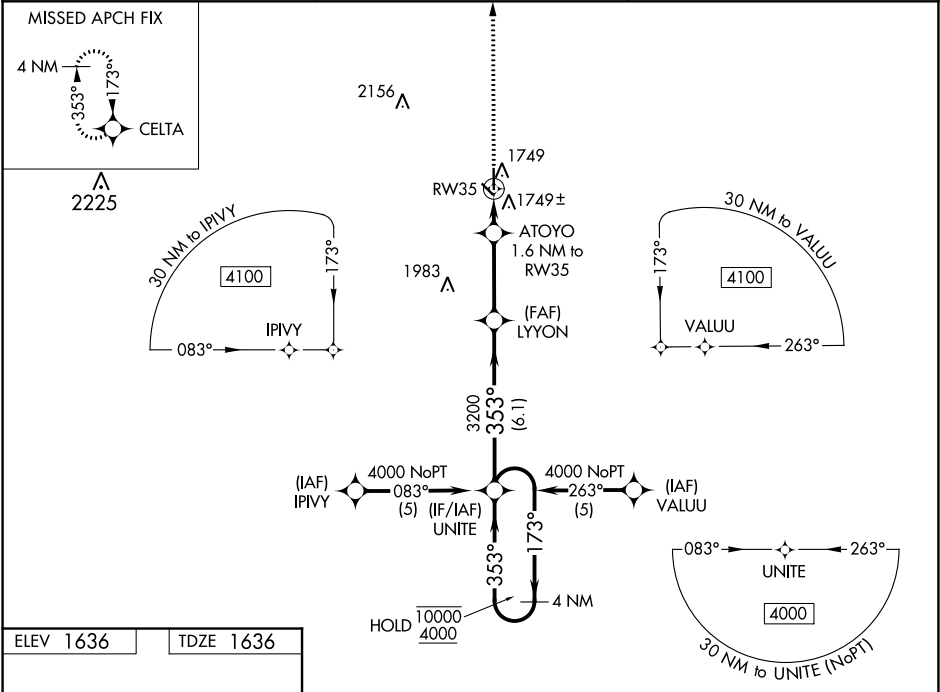


WAAS CH 93614 W35A	APP CRS 353°	Rwy Idg 4317 TDZE 1636 Apt Elev 1636
--	------------------------	---

RNAV (GPS) RWY 35
FAIRMONT STATE AIRFIELD (FMZ)

RNP APCH. NA Circling to Rwy 12, 30 NA at night. Baro-VNAV NA. Use York altimeter setting, when not received use Hebron altimeter setting and increase all DA 31 feet and all MDA 40 feet.	MISSED APPROACH: Climb to 4000 direct CELTA and hold.
---	---

JYR AWOS-3 124.175	MINNEAPOLIS CENTER 119.4 278.8	CTAF 122.9
------------------------------	--	----------------------



4000 ↑		CELTA 		UNITE		4 NM Holding Pattern			
*LNAV only.		ATOYO 1.6 NM to RW35		LYON		173° → 10000 ← 353° 4000			
		2180*		353°		GP 3.00° TCH 40			
1.6 NM		3.1 NM		6.1 NM					
CATEGORY		A		B		C		D	
LPV DA		1934-1 298 (300-1)				NA			
LNAV/ VNAV		2094-1 3/4 458 (500-1 3/4)				NA			
LNAV MDA		2060-1 424 (500-1)				NA			
CIRCLING		2120-1 484 (500-1)				NA			