

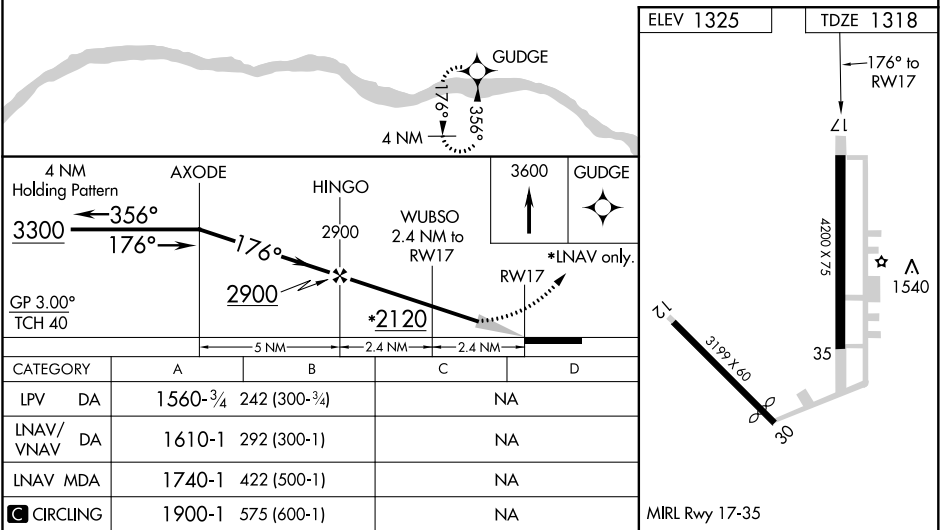
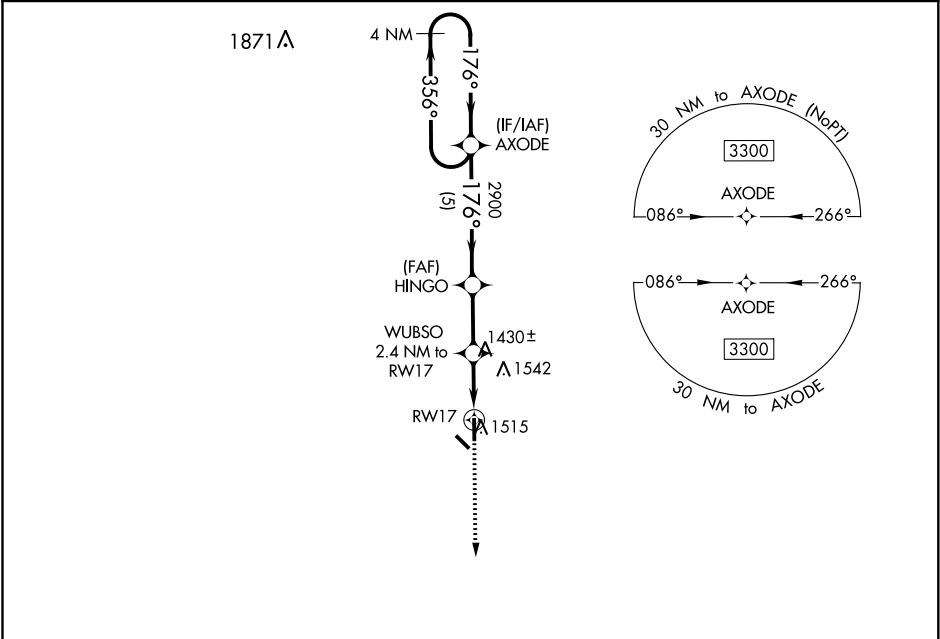
WAAS CH 58034 W17A	APP CRS 176°	Rwy Idg TDZE Apt Elev	4200 1318 1325
--	------------------------	-----------------------------	---

RNAV (GPS) RWY 17

SCRIBNER STATE (SCB)

<div><div><div></div><div>NA</div></div><div>DME/DME RNP-0.3 NA. Use Fremont altimeter setting, when not received, use Wahoo altimeter setting and increase all DA 24 feet and all MDA 40 feet and LPV Cats A and B visibility 1/8 mile. Helicopter visibility reduction below 3/4 SM NA. Baro-VNAV NA.</div></div>	<div>MISSED APPROACH: Climb to 3600 direct GUDGE and hold.</div>
---	--

FET AWOS-3 121.275	OMAHA APP CON 120.1 354.05	CTAF 122.9
------------------------------	--------------------------------------	----------------------



NC-2, 03 DEC 2020 to 31 DEC 2020

NC-2, 03 DEC 2020 to 31 DEC 2020