

VOR/DME SCB	APP CRS	Rwy Idg	4200
111.0	341°	TDZE	1319
Chan 47		Apt Elev	1325

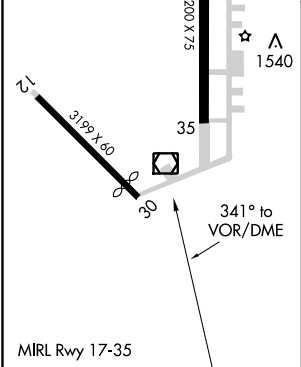
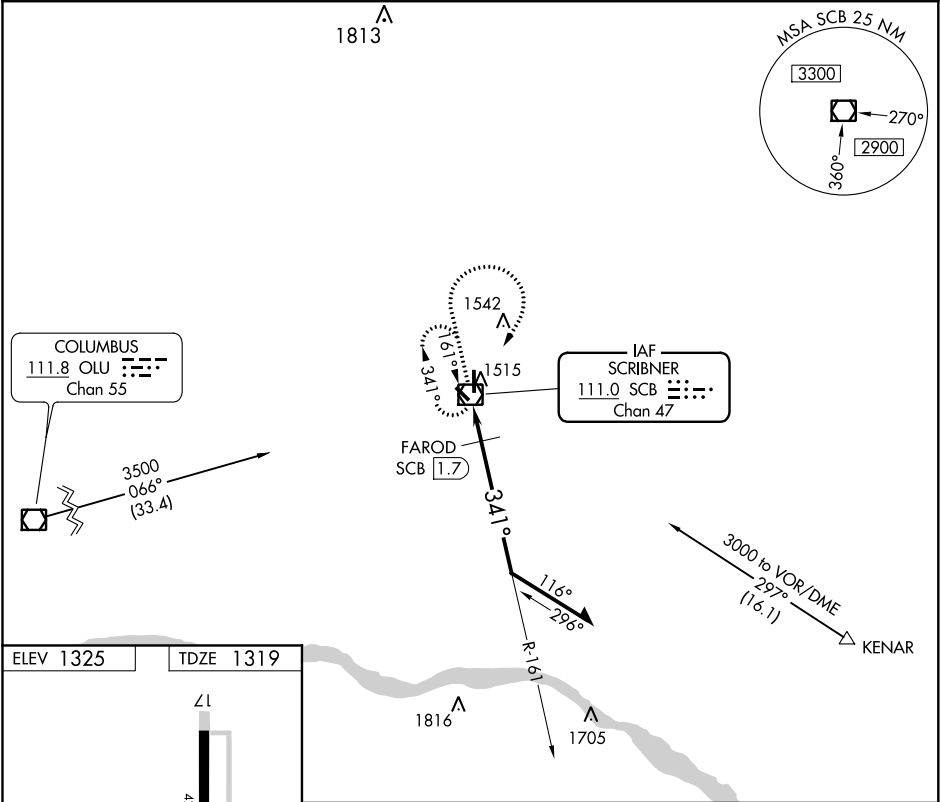
VOR/DME RWY 35
SCRIBNER STATE (SCB)

**NA**

Use Fremont altimeter setting.

MISSED APPROACH: Climb to 3000 then right turn direct SCB VOR/DME and hold.

FET AWOS-3 121.275	OMAHA APP CON 120.1 354.05	CTAF 122.9
-----------------------	-------------------------------	---------------



3000	SCB	SCB VOR/DME	161°	3000	Remain within 10 NM
			341°	1940	
			≤ 3.02°		
			TCH 40		
			1.7 NM		
CATEGORY	A	B	C	D	
S-35	1800-1	481 (500-1)	NA		
CIRCLING	1900-1	575 (600-1)	NA		

NC-2, 03 DEC 2020 to 31 DEC 2020

NC-2, 03 DEC 2020 to 31 DEC 2020