

LOC/DME I-GQR <b>111.75</b> Chan 54 (Y)	APP CRS <b>035°</b>	Rwy Idg TDZE Apt Elev <b>4270</b> <b>744</b> <b>757</b>
---	------------------------	--

ILS or LOC RWY 3

CHARLES B WHEELER DOWNTOWN (MKC)

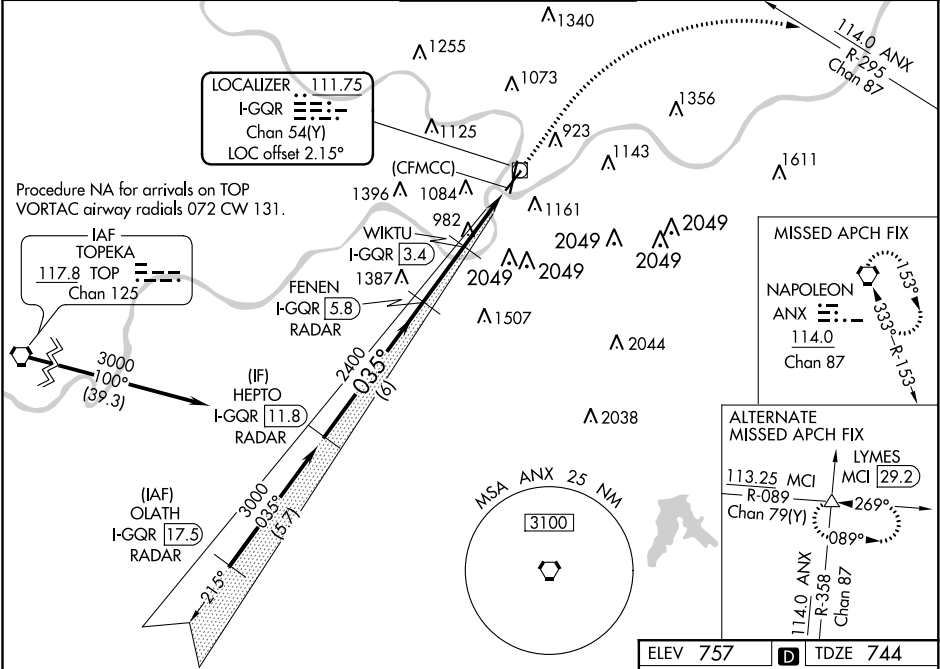
DME or RADAR required for procedure entry. DME or RADAR required for LOC only.

Autopilot coupled approach NA below 1013. Circling NA east Rwy 1-19.

Circling NA to Rwy 21. Circling NA for Cat D to Rwy 3. Rwy 3 helicopter visibility reduction below RVR 4000 NA.

MISSED APPROACH: Climb to 3000 on heading 035° and on ANX VORTAC R-295 to ANX VORTAC and hold.

ATIS <b>120.75</b>	KANSAS CITY APP CON <b>118.4 307.35</b>	DOWNTOWN TOWER <b>133.3 233.7</b>	CLNC DEL <b>121.9</b>	GND CON <b>121.9</b>
-----------------------	--	--------------------------------------	--------------------------	-------------------------



VGSI and ILS glidepath not coincident (VGSI Angle 3.00/TCH 50).				
<div><div>HEPTO I-GQR 11.8 RADAR</div><div>3000</div><div>GS 3.00° TCH 44</div><div>035°</div><div>2400</div><div>6 NM</div><div>2.4 NM</div><div>1.2 NM</div><div>1.4 NM</div><div>WIKTU I-GQR 3.4</div><div>FENEN I-GQR 5.8 RADAR</div><div>*LOC only</div><div>*1560</div><div>2400</div><div>2000</div><div>3000</div><div>hdg 035°</div><div>ANX R-295</div><div>ANX</div><div>CFMCC I-GQR 2.2</div><div>CFMCC I-GQR 0.8</div></div>				
CATEGORY	A	B	C	D
S-ILS 3	994/40 250 (300-¾)			
S-LOC 3	1560/55 816 (900-1)	1560/60 816 (900-1¼)	1560-2½ 816 (900-2½)	NA
CIRCLING	1560-1 803 (900-1)	1560-1¼ 803 (900-1¼)	1560-2½	803 (900-2½)
WIKTU FIX MINIMUMS (DME REQUIRED)				
S-LOC 3	1240/55	496 (500-1)	1240-1¾ 496 (500-1¾)	NA
CIRCLING	1380-1 623 (700-1)	1400-1 643 (700-1)	1460-2 703 (800-2)	1540-2½ 783 (800-2½)

