

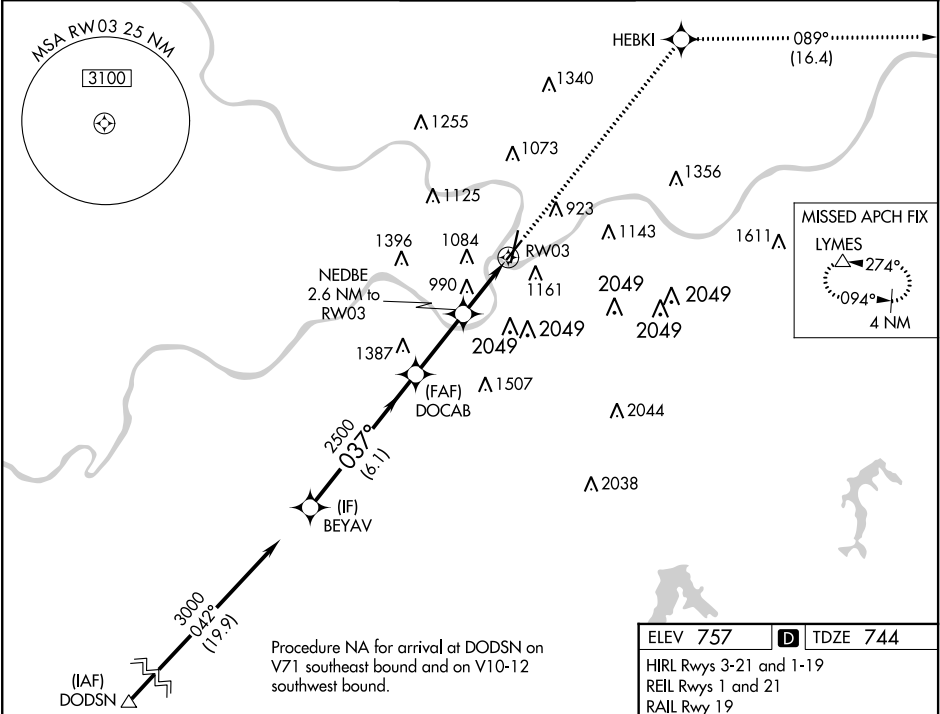
WAAS CH 50112 W03A	APP CRS 037°	Rwy Idg 4270 TDZE 744 Apt Elev 757
--	------------------------	---

RNAV (GPS) RWY 3
CHARLES B WHEELER DOWNTOWN (MKC)

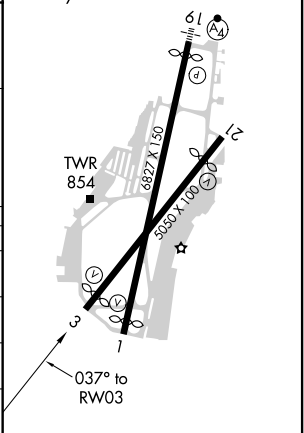
⚠ For uncompensated Baro-VNAV systems, LNAV/VNAV NA below -6°C (22°F) or above 54°C (130°F). Circling NA east of Rwy 1-19. DME/DME RNP-0.3 NA. Circling NA for Cat D to Rwy 3. Rwy 3 helicopter visibility reduction below RVR 4000 NA. Circling NA to Rwy 21.

MISSED APPROACH: Climb to 3000 direct HEBKI and on track 089° to LYMES and hold.

ATIS 120.75	KANSAS CITY APP CON 118.4 307.35	DOWNTOWN TOWER 133.3 233.7	CLNC DEL 121.9	GND CON 121.9
-----------------------	--	--------------------------------------	--------------------------	-------------------------



BEYAV	DOCAB	NEDBE	HEBKI	LYMES
3000	2500	2500	3000	tr 089°
GP 3.00° TCH 50				
6.1 NM	2.8 NM	1.2 NM	1.4 NM	
CATEGORY	A	B	C	D
LPV DA	994/40	250 (300-¾)		NA
LNAV/VNAV DA	1411-2½	667 (700-2½)		NA
LNAV MDA	1240/55	496 (500-1)	1240-1⅜ 496 (500-1⅜)	NA
CIRCLING	1380-1 623 (700-1)	1400-1 643 (700-1)	1460-2 703 (800-2)	1540-2½ 783 (800-2½)



NC-3, 03 DEC 2020 to 31 DEC 2020

NC-3, 03 DEC 2020 to 31 DEC 2020