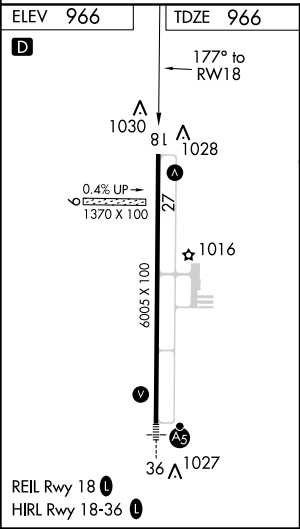
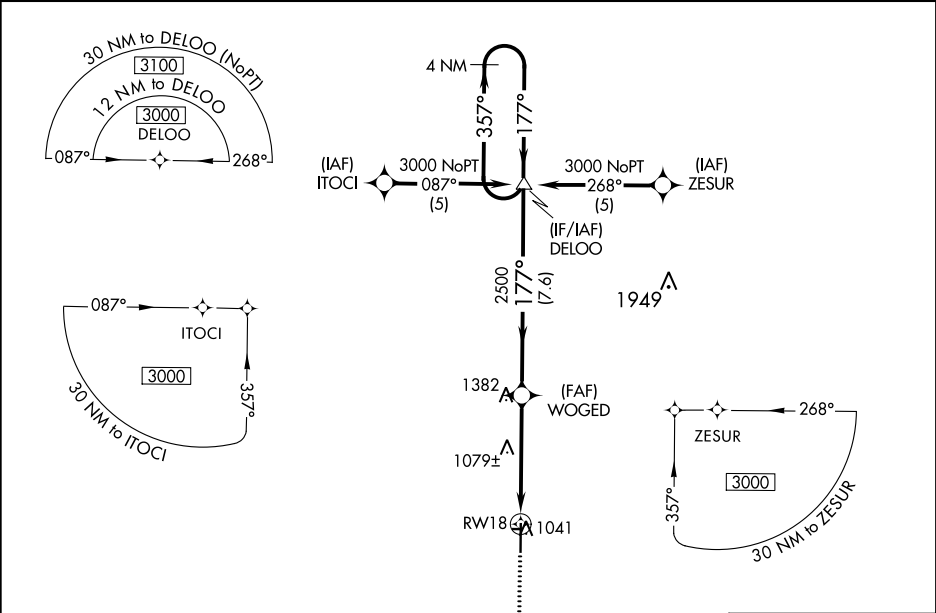


APP CRS	Rwy Idg	<b>6005</b>
<b>177°</b>	TDZE	<b>966</b>
	Apt Elev	<b>966</b>

RNAV (GPS) RWY 18  
KIRKSVILLE RGNL (IRK)

RNP APCH.	MISSED APPROACH: Climb to 3000 direct HOROK and hold.
Circling NA to Rwy 9 and 27. Rwy 18 helicopter visibility reduction below ¾ SM NA.	

ASOS <b>121.125</b>	KANSAS CITY CENTER <b>132.6 370.9</b>	UNICOM <b>122.8 (CTAF) 0</b>
------------------------	--	---------------------------------



ELEV 966	TDZE 966	MISSED APCH FIX HOROK 357° 177° 4 NM			
3000	HOROK	VGSI and descent angles not coincident (VGSI Angle 3.00/TCH 33).			
1.1 NM to RWY 18		WOGED		DELOO	
1.1 NM		3.5 NM		7.6 NM	
CATEGORY	A	B	C	D	
LNAV MDA	1340-1 374 (400-1)				1340-1¼ 374 (400-1¼)
CIRCLING	1400-1 434 (500-1)	1420-1 454 (500-1)	1420-1½ 454 (500-1½)	1520-2 554 (600-2)	