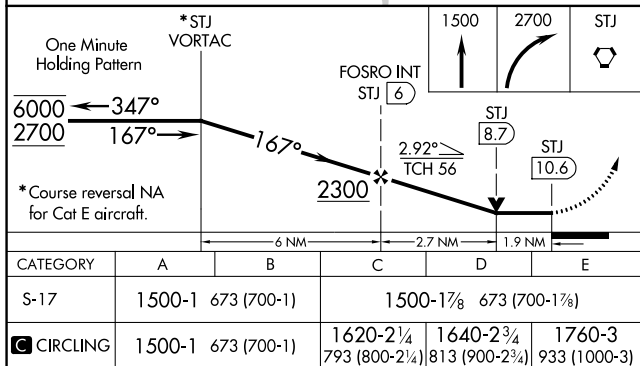
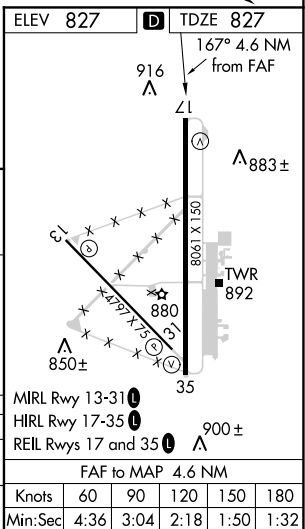


VOR or TACAN RWY 17
ROSECRANS MEMORIAL (STJ)

MISSED APPROACH: Climb to 1500 then climbing right turn to 2700 direct STJ VORTAC and hold. (TACAN aircraft climb to 2300 then climbing left turn to 3100 direct HANOT INT/STJ 24 DME and hold NW, LT, 114° inbound, GPS required).

ATIS 125.05	ST. JOSEPH APP CON ★ 120.35 360.8	ST. JOSEPH TOWER ★ 126.9 (CTAF) 0 239.0	GND CON 121.9	UNICOM 122.95
-----------------------	---	---	-------------------------	-------------------------



NC-3, 03 DEC 2020 to 31 DEC 2020

NC-3, 03 DEC 2020 to 31 DEC 2020