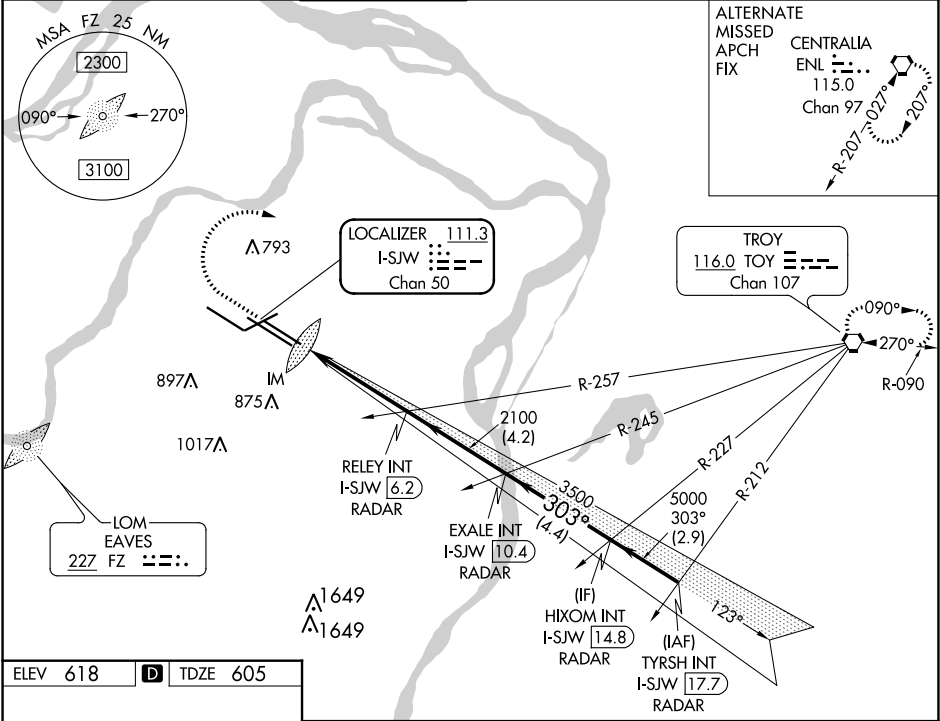


LOC/DME I-SJW <b>111.3</b> Chan <b>50</b>	APP CRS <b>303°</b>	Rwy ldg TDZE Apt Elev <b>9003</b> <b>605</b> <b>618</b>
---	------------------------	--

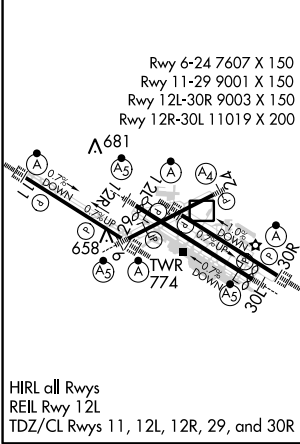
ILS RWY 30R (CAT II & III)  
ST LOUIS LAMBERT INTL (STL)

RADAR required for procedure entry. Simultaneous approach authorized with Rwy 29.		ALSF-2 	MISSED APPROACH: Climb to 1020 then climbing right turn to 3000 direct TOY VORTAC and hold.
--	--	------------	---

D-ATIS <b>125.025</b> <b>379.925</b>	ST. LOUIS APP CON <b>132.125 360.6</b>	ST. LOUIS TOWER <b>120.05 284.6</b>	GND CON <b>121.9 348.6</b> (Inbound) <b>121.65 377.175</b> (Outbound) <b>118.925 227.125</b> (Rwy 11/29)	CLNC DEL <b>119.5 363.1</b>	CPDLC
--	---	--	---	--------------------------------	-------



ELEV 618	<b>D</b>	TDZE 605
----------	----------	----------



1020	3000	TOY	RELEY INT I-SJW 6.2 RADAR	EXALE INT I-SJW 10.4 RADAR	HIXOM INT I-SJW 14.8 RADAR	TYRSH INT I-SJW 17.7 RADAR
IM	705	2100	2100	3500	5000	5000
1200'	4.5 NM	4.2 NM	4.4 NM	2.9 NM		
CATEGORY	A	B	C	D		
S-ILS 30R	CAT II RA 116/12 100 DA 705					
S-ILS 30R	CAT III RVR 06					

CATEGORY II & III ILS - SPECIAL AIRCREW & AIRCRAFT CERTIFICATION REQUIRED