

LOC/DME I-OGZ 111.95 Chan 56(Y)	APP CRS 123°	Rwy Idg TDZE 618 Apt Elev 618	ILS or LOC RWY 11 ST LOUIS LAMBERT INTL (STL)	
---	------------------------	---	--	--

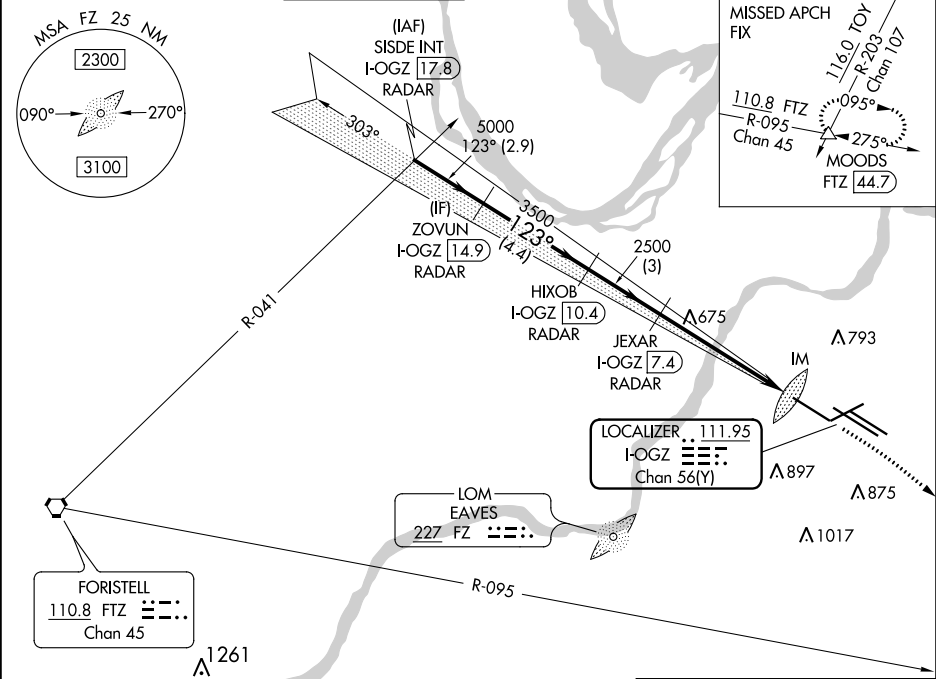
RADAR required for procedure entry. DME or RADAR required.

Simultaneous approach authorized with Rwy 12R/L.
Disregard OM signal associated with ILS to Rwy 12R.
For inop ALS, increase S-ILS Cat E visibility to RVR 4000,
and S-LOC Cat C/D/E visibility to RVR 5500.

ALSIF-2

MISSED APPROACH: Climb to 1060 then climbing
right turn to 3000 on heading 130° and FTZ R-095
to MOODS INT/FTZ 44.7 DME and hold.

D-ATIS 125.025 379.925	ST. LOUIS APP CON 132.125 360.6	ST. LOUIS TOWER 132.475 239.275	GND CON 121.9 348.6 (Inbound) 121.65 377.175 (Outbound) 118.925 227.125 (Rwy 11/29)	CLNC DEL 119.5 363.1	CPDLC
--	---	---	---	--------------------------------	-------



VGSI and ILS glidepath not coincident (VGSI Angle 3.00/TCH 67°).					
<div><div>1060</div><div>3000</div><div>FTZ R-095</div><div>MOODS</div></div>					
SISDE INT I-OGZ 17.8 RADAR ZOVUN I-OGZ 14.9 RADAR HIXOB I-OGZ 10.4 RADAR JEXAR I-OGZ 7.4 RADAR *I-OGZ 2.7 I-OGZ 1.8					
5000 — 123° — 5000 3500 2500 2500 IM					
GS 3.00° TCH 55 2.9 NM 4.4 NM 3 NM 4.6 NM 0.9 NM 0.1 NM					
CATEGORY	A	B	C	D	E
S-ILS 11	818/18 200 (200-½)				
S-LOC 11	980/24 362 (400-½)		980/35 362 (400-¾)		

