

ILS or LOC RWY 12L  
ST LOUIS LAMBERT INTL (STL)

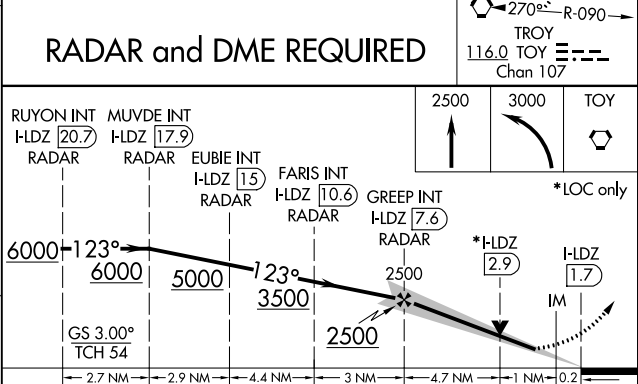
ALSF-2

**MISSED APPROACH:** Climb to 2500 then climbing left turn to 3000 direct TOY VORTAC and hold.

Map details include:

- Stations and Frequencies:**
  - (IAF) RUYON INT I-LDZ 20.7 RADAR
  - MUVDE INT I-LDZ 17.9 RADAR
  - (IF) EUBIE INT I-LDZ 15 RADAR
  - ST LOUIS 117.4 STL Chan 121
  - GREENP INT I-LDZ 7.6 RADAR
  - FARIS INT I-LDZ 10.6 RADAR
  - LOCALIZER 108.9 I-LDZ Chan 26
  - MISSED APCH FIX 090°
- Flight Paths and Altitudes:**
  - 110.8 FTZ Chan 45 (R-037, R-045)
  - 6000 (2.3°)
  - 5000 (2.9°)
  - 3500 (2.3°)
  - 2500 (4.4°)
  - 2500 (13°)
  - 714±
  - 793
  - 875
  - 897
  - 1017
- Other Labels:**
  - ALTERNATE MISSED APCH FIX 031° 211°
  - FASHE STL 19.4
  - 117.4 STL R-031 Chan 121
  - 116.0 TOY R-322 Chan 107
  - MSA STL 25 NM
  - 2300
  - 2800
  - 090°
  - 270°

## RADAR and DME REQUIRED



HIRL all Rwy's REIL Rwy 12L TDZ/CL Rwy's 11, 12L, 12R, 29, and 30R					
FAF to MAP 5.9 NM					
Knots	60	90	120	150	180
Min:Sec	5:54	3:56	2:57	2:22	1:58

ST LOUIS LAMBERT INTL (STL)  
ILS or LOC RWY 12L