

TOP ALTITUDE:
5000

TAKEOFF MINIMUMS

Rwy 6: Standard with minimum climb of 500' per NM to 1120 then minimum climb of 270' per NM to 5000.

Rwy 24: Standard with minimum climb of 500' per NM to 1120 then minimum climb of 250' per NM to 5000.

Rwys 11, 12L/R: Standard with minimum climb of 500' per NM to FUNKE.

Rwy 29: Standard with minimum climb of 500' per NM to DSAPP.

Rwys 30L/R: Standard with minimum climb of 500' per NM to WOLTR.

NOTE: RNAV 1.

NOTE: DME/DME/IRU or GPS required.

NOTE: RADAR required.

NOTE: For use by turbojet aircraft only.

D-ATIS
125.025CLNC DEL
119.5 363.1

CPDLC

GND CON

121.9 348.6 (Inbound)

121.65 377.175 (Outbound)

118.925 227.125 (Rwy 11/29)

ST. LOUIS TOWER

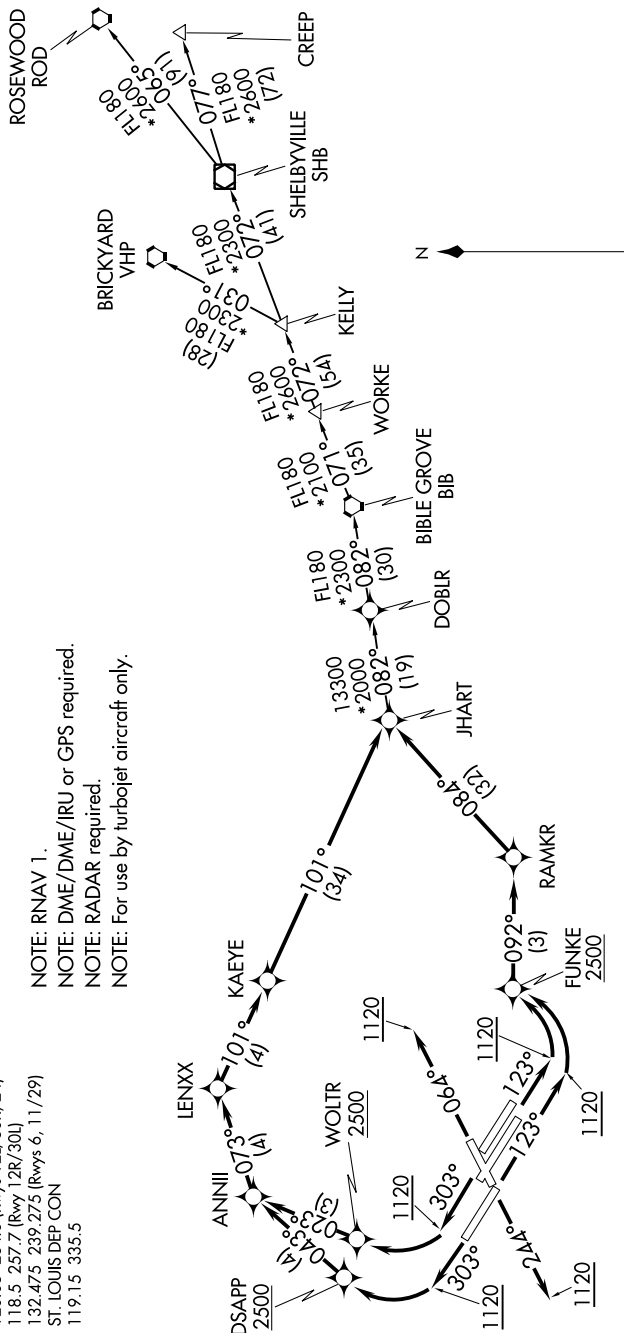
120.05 284.6 (Rwys 12L/30R, 24)

118.5 257.7 (Rwy 12R/30L)

132.475 239.275 (R)

ST. LOUIS DEP CON

119.15 335.5



NOTE: Chart not to scale.

(NARRATIVE ON FOLLOWING PAGE)

NC-3, 03 DEC 2020 to 31 DEC 2020

JHART SIX DEPARTURE (RNAV)

(JHART6.JHART) 19JUL18

ST. LOUIS, MISSOURI
ST LOUIS LAMBERT INTL (STL)