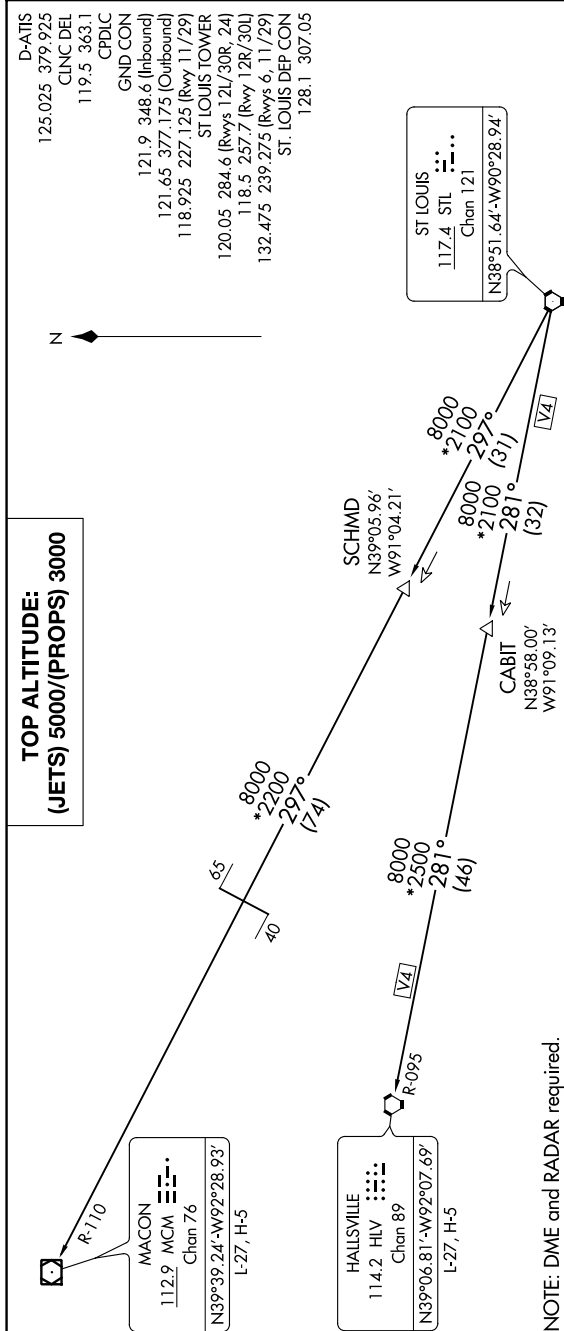


NC-3, 03 DEC 2020 to 31 DEC 2020



NOTE: DME and RADAR required.

DEPARTURE ROUTE DESCRIPTION

Climb on assigned heading for vector to appropriate route.

JETS: Maintain 5000 or assigned altitude, thence

PROPS: Maintain 3000 or assigned altitude, thence

... (transition). Expect filed altitude 10 minutes after departure.

HALLSVILLE TRANSITION (OZARK7.HLV): From over STL VORTAC on STL R-281 to CABIT, then on STL R-281 and HLW R-095 to HLW VORTAC.

MACON TRANSITION (OZARK7.MCM): From over STL VORTAC on STL R-297 to SCHMD, then on STL R-297 and MCM R-110 to MCM VOR/DME.

TAKEOFF MINIMUMS

Rwys 6, 12L/R, 24, 29: Standard.

Rwy 11: 200-1 or standard with minimum climb of 370' per NM to 900.

Rwy 30L: 200-1 or standard with minimum

climb of 245' per NM to 800.

Rwy 30R: 200-13/8 or standard with minimum

climb of 230' per NM to 800.

NOTE: Chart not to scale.

NC-3, 03 DEC 2020 to 31 DEC 2020