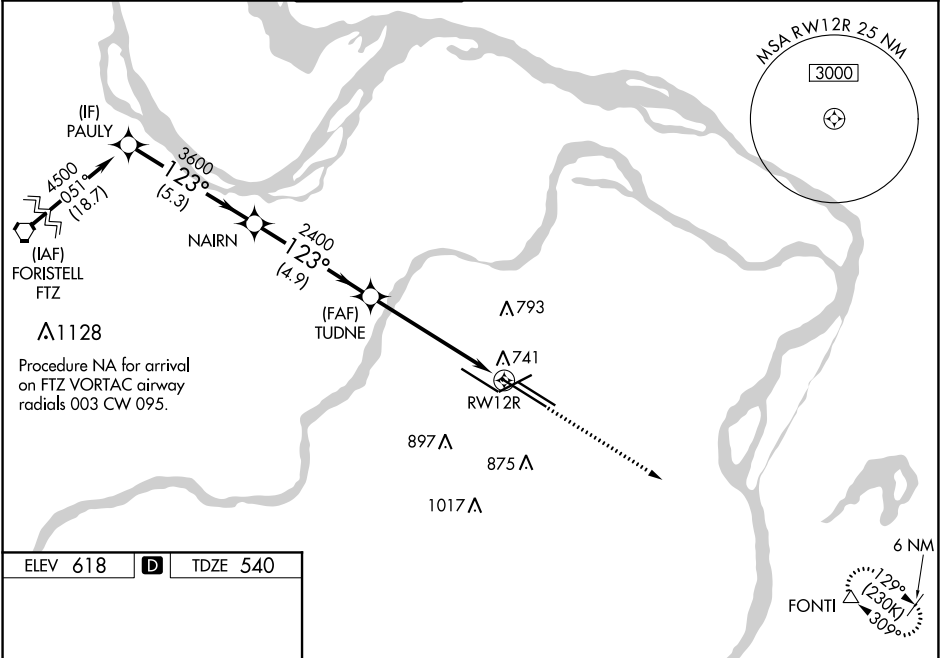


WAAS CH <b>78121</b> <b>W12B</b>	APP CRS <b>123°</b>	Rwy ldg <b>10552</b> TDZE <b>540</b> Apt Elev <b>618</b>
----------------------------------------	------------------------	----------------------------------------------------------------

RNAV (GPS) Y RWY 12R  
ST LOUIS LAMBERT INTL (STL)

<p>▼ For uncompensated Baro-VNAV systems, LNAV/VNAV NA below -16°C (4°F) or above 54°C (130° F). DME/DME RNP-0.3 NA. For inop ALS, increase LPV Cat E visibility to RVR 4000, LNAV Cats A/B visibility to RVR 5000, and LNAV Cat E visibility to 1½ SM. Inop table does not apply to LNAV/VNAV. Simultaneous approach authorized with Rwy 11. LNAV procedure NA during simultaneous operations. Use of FD or AP required during simultaneous operations.</p>				MALSR	MISSED APPROACH: Climb to 5000 direct FONTI and hold, continue climb-in-hold to 5000.
D-ATIS <b>125.025</b> <b>379.925</b>	ST. LOUIS APP CON <b>132.125 360.6</b>	ST. LOUIS TOWER <b>118.5 257.7</b>	GND CON <b>121.9 348.6</b> (Inbound) <b>121.65 377.175</b> (Outbound) <b>118.925 227.125</b> (Rwy 11/29)	CLNC DEL <b>119.5 363.1</b>	CPDLC



ELEV 618	<b>D</b>	TDZE 540
<p>123° to RWY 12R</p> <p>Rwy 6-24 7607 X 150 Rwy 11-29 9001 X 150 Rwy 12L-30R 9003 X 150 Rwy 12R-30L 11019 X 200</p> <p>HIRL all Rwys REIL Rwy 12L TDZ/CL Rwys 11, 12L, 12R, 29, and 30R</p>		

PAULY		NAIRN		TUDNE		FONTI	
4500		3600		2400		5000	
123°		123°		123°		123°	
5.3 NM		4.9 NM		4.4 NM		1.3 NM	
CATEGORY	A	B	C	D	E		
LPV	DA	740/18 200 (200-½)					
LNAV/VNAV	DA	1103-2 563 (500-2)					
LNAV	MDA	1000/40 460 (400-¾)		1000/50 460 (400-1)			