

TEDDD FIVE DEPARTURE (RNAV)

AL-360 (FAA)

ST LOUIS LAMBERT INTL (STL)
ST. LOUIS, MISSOURI

climb	125.025	379.925	D-ATS
			CINC DEL
	119.5	363.1	CPDC
			GND CON
	121.9	348.6 (Inbound)	
	121.65	377.175 (Outbound)	
	118.925	227.125 (Rwy 11/29)	
		ST. LOUIS TOWER	
	120.05	284.6 (Rwys 12L/30R, 24L)	
	118.5	257.7 (Rwy 12R/30L)	
	32.475	239.275 (Rwys 6, 11/29)	
		ST. LOUIS DEP CON	
		119.15	335.5

Rwys 6, 24: Standard with minimum climb of 500' per NM to 1120 then minimum climb of 280' per NM to 5000.

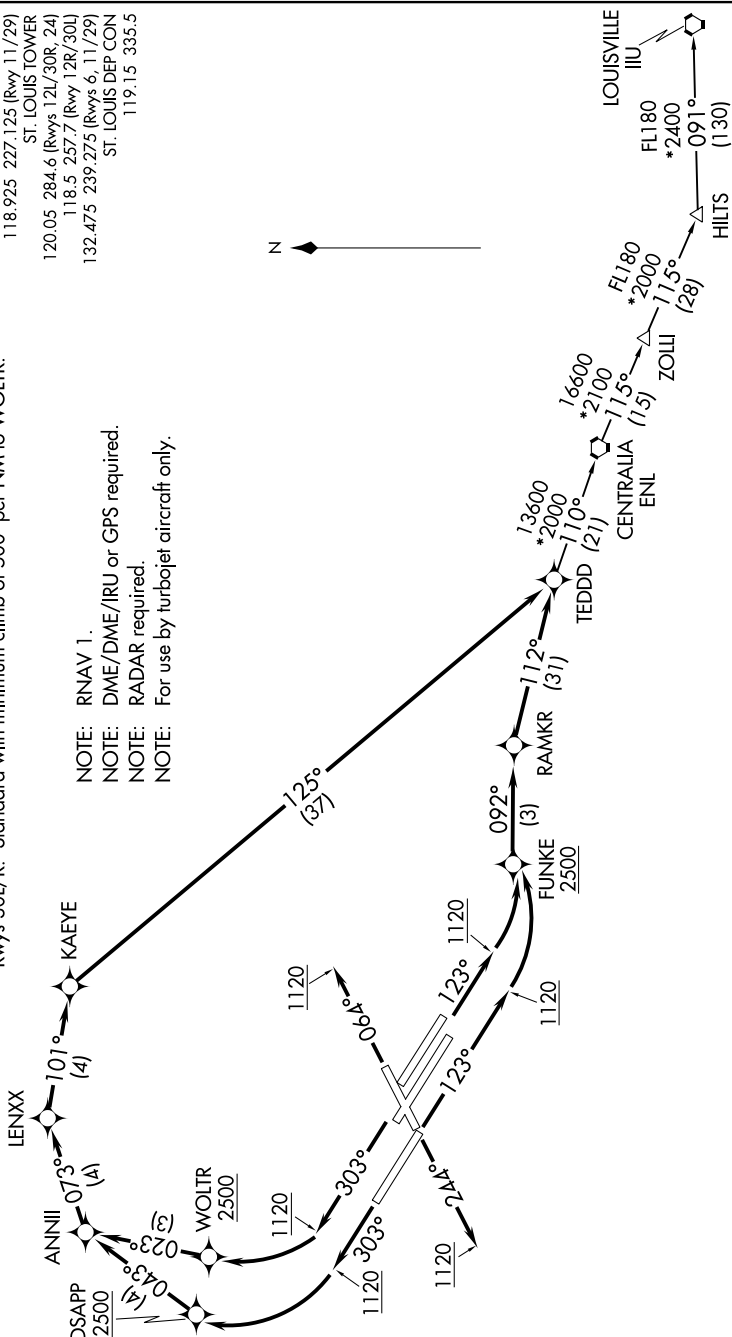
Rwys 11, 12L/R: Standard with minimum climb of 500' per NM to FUNKE.

Rwy 29: Standard with minimum climb of 500' per NM to DSAPP.

Rwys 30L/R: Standard with minimum climb of 500' per NM to WOLTR.

NOTE: RNAV 1.
NOTE: DME/DME/IRU or GPS required.
NOTE: RADAR required.
NOTE: For use by turbojet aircraft only.

TOP ALTITUDE:
5000



NOTE: Chart not to scale.

(NARRATIVE ON FOLLOWING PAGE)

NC-3, 03 DEC 2020 to 31 DEC 2020

TEDDD FIVE DEPARTURE (RNAV)
(TEDDD5.TEDDD) 19JUL18

ST. LOUIS, MISSOURI
ST LOUIS LAMBERT INTL (STL)