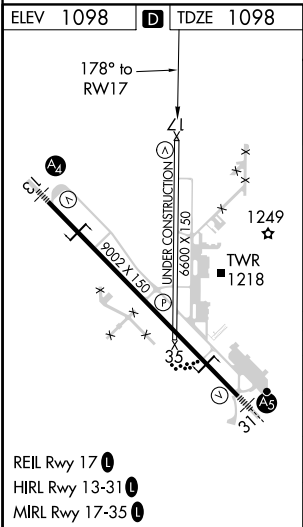
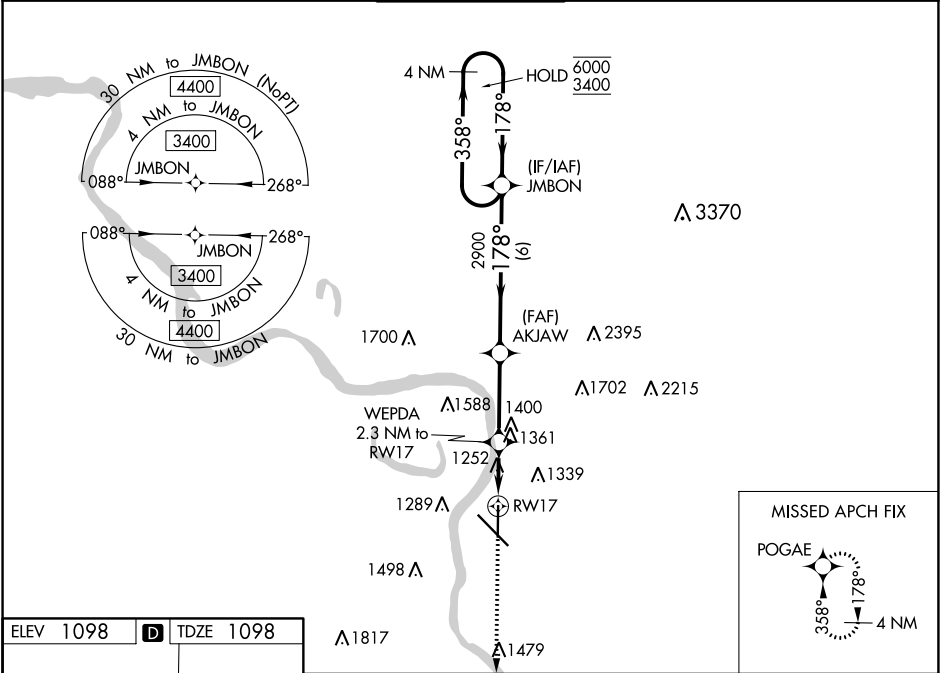




WAAS CH <b>77838</b> <b>W17A</b>	APP CRS <b>178°</b>	Rwy ldg TDZE Apt Elev	<b>6598</b> <b>1098</b> <b>1098</b>
--	------------------------	-----------------------------	---

RNAV (GPS) RWY 17

SIoux GATEWAY/BRIGADIER GENERAL BUD DAY FIELD (SUx)

RNP APCH. ▼ Rwy 17 helicopter visibility reduction below ¾ SM NA. ▲ For uncompensated Baro-VNAV systems, LNAV/VNAV NA below -21°C or above 54°C.		MISSED APPROACH: Climb to 3200 direct POGAE and hold.		
ATIS <b>119.45 270.8</b>	SIoux CITY APP CON * <b>124.6 307.0</b>	SIoux CITY TOWER * <b>118.7 (CTAF) 0 254.3</b>	GND CON <b>121.9 348.6</b>	UNICOM <b>122.95</b>



3200 ↑		POGAE 		VGSI and RNAV glidepath not coincident (VGSI Angle 3.00/TCH 72).		4 NM Holding Pattern	
*LNAV only		WEPDA 2.3 NM to RW17		AKJAW 2900		JMBON	
*1.1 NM to RW17 		1880*		2900 178°		358° → 6000 ← 178° 3400	
1.1		1.2		3.2 NM		6 NM	
CATEGORY		A		B		C	
LPV DA				1364-7/8 266 (300-7/8)			
LNAV/ VNAV DA				1531-13/8 433 (500-13/8)			
LNAV MDA		1520-1 422 (500-1)		1520-11/4 422 (500-11/4)			
CIRCLING		1640-1 542 (600-1)		1700-1 602 (700-1)		1700-13/4 602 (700-13/4) 1840-21/2 742 (800-21/2)	