

WAAS CH <b>90211</b> <b>W31A</b>	APP CRS <b>313°</b>	Rwy Idg TDZE Apt Elev	<b>9002</b> <b>1096</b> <b>1098</b>
--	------------------------	-----------------------------	---

RNAV (GPS) RWY 31

SIoux GATEWAY/BRIGADIER GENERAL BUD DAY FIELD (SUx)

RNP APCH.

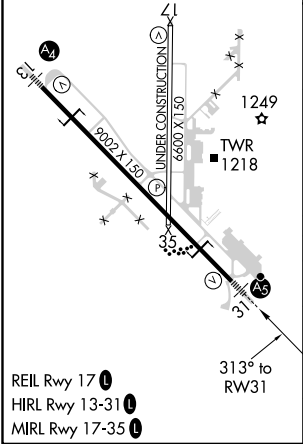
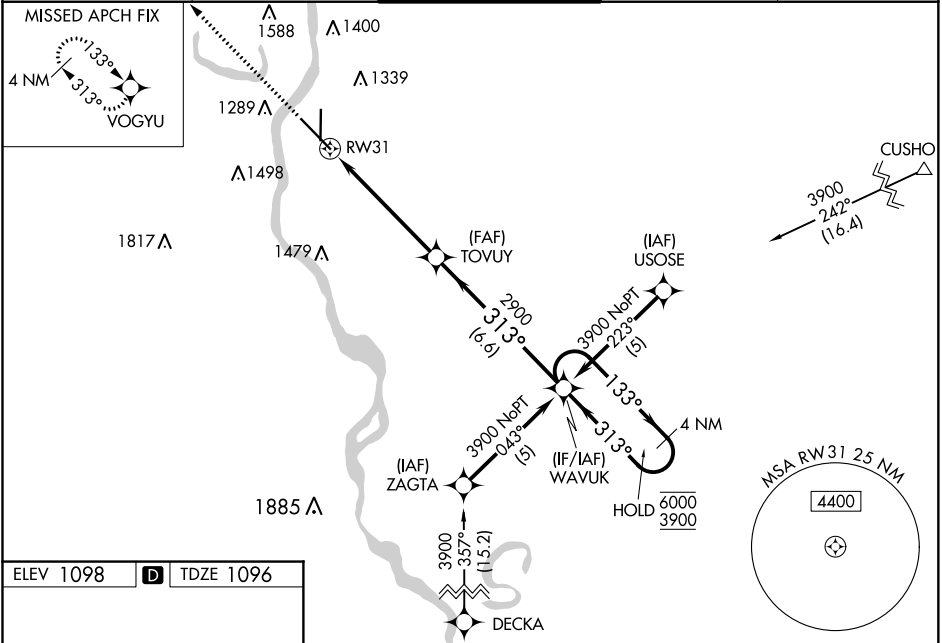
⚠

For uncompensated Baro-VNAV systems, LNAV/VNAV NA below -21°C or above 54°C. For inop ALS increase LPV Cat E visibility to RVR 4000; increase LNAV/VNAV all Cats visibility to 1½ SM and LNAV Cats C/D/E visibility to 1¾ SM.  
\*\* RVR 1800 authorized with use of FD or AP or HUD to DA.

MALSR

MISSED APPROACH: Climb to 3500 direct VOGYU and hold.

ATIS <b>119.45 270.8</b>	SIoux CITY APP CON ★ <b>124.6 307.0</b>	SIoux CITY TOWER ★ <b>118.7 (CTAF) 0 254.3</b>	GND CON <b>121.9 348.6</b>	UNICOM <b>122.95</b>
-----------------------------	--	---	-------------------------------	-------------------------



3500	VOGYU	VGSi and RNAV glidepath not coincident (VGSi Angle 3.00/TCH 55).			
*LNAV only.		*1.3 NM to RW31	WAVUK 4 NM Holding Pattern		
RW31		2900	TOVUY	2900	133° → 6000 ← 313° 3900
1.3 NM		4.2 NM	6.6 NM	GP 3.00° TCH 43	
CATEGORY	A	B	C	D	E
LPV DA**	1296/24 200 (200-½)				
LNAV/VNAV DA	1596-1¼ 500 (500-1¼)				
LNAV MDA	1560/24 464 (500-½)		1560/50 464 (500-1)		
CIRCLING	1640-1 542 (600-1)	1700-1 602 (700-1)	1700-1¾ 602 (700-1¾)	1840-2½ 742 (800-2½)	2000-3 902 (1000-3)

NC-3, 03 DEC 2020 to 31 DEC 2020

NC-3, 03 DEC 2020 to 31 DEC 2020