

KNOB NOSTER, MISSOURI

HI-ILS or LOC Z RWY 1

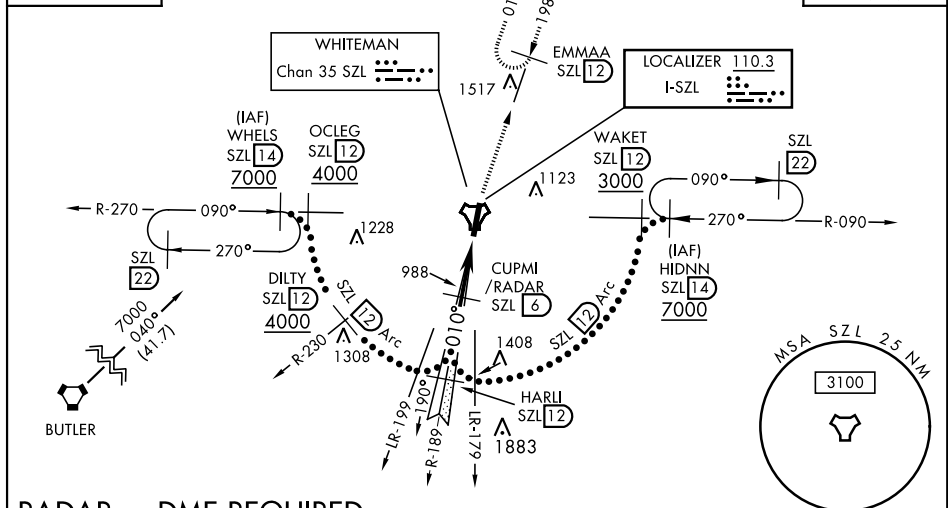
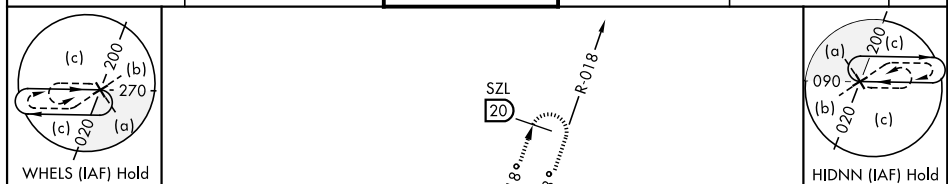
LOC 1-SZL <u>110.3</u>	APCH CRS 010°	Rwy Idg 12,400 TDZE 837 Arpt Elev 871	JAL-496 [USAF]	WHITEMAN AFB (KSZL)
----------------------------------	-------------------------	--	----------------	---------------------

T * When ALS inop, increase CAT CDE RVR to 40 and vis to $\frac{3}{4}$ mile.
 ** When ALS inop, increase CAT CDE vis to $1\frac{1}{4}$ miles.
 *** Circling not authorized W of Rwy 1-19.

ALSF-1

MISSED APPROACH: Climb to 3000 via SZL TACAN R-018 to EMMAA and hold.

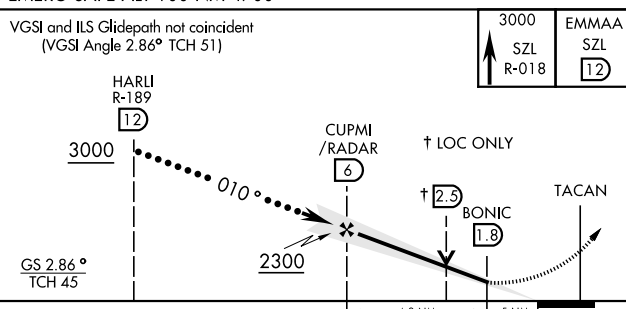
ATIS 118.725 239.025	WHITEMAN APP CON 127.45 284.0	WHITEMAN TOWER★ 132.4 318.8	GND CON 128.275 275.8	CLNC DEL 121.75 335.8	ASR
-------------------------	----------------------------------	--------------------------------	--------------------------	--------------------------	-----



RADAR or DME REQUIRED

EMERG SAFE ALT 100 NM 4700

VGSI and ILS Glidepath not coincident
(VGSI Angle 2.86° TCH 51)




CATEGORY	C	D	E
S-ILS 1*	1037/24	200	(200-½)
S-LOC 1**	1260/40	423	(400-¾)
 CIRCLING ***	1340-1½ 469 (500-1½)	1460-2	589 (600-2)

Diagram of HIRL Rwy 1-19. The runway is 12,400 x 200 feet with a 0.3% up slope. Elevation is 871 feet, and TDZE is 837 feet. Navigation aids include a star for 1034, a square for TWR 984, a triangle for 1018, and circles for 932, 860, and 962. A 010° 4.7 NM distance is marked from FAF. A table at the bottom shows speed and time data.

FAF to MAP 4.2 NM					
Knots	120	140	160	180	200
Min:Sec	2:06	1:48	1:35	1:24	1:16

NOB NOSTER, MISSOURI

38°43'N-93°33'W

WHITEMAN AFB (KSZL)

Amdt 1 10OCT19

HI-ILS or LOC Z RWY 1