
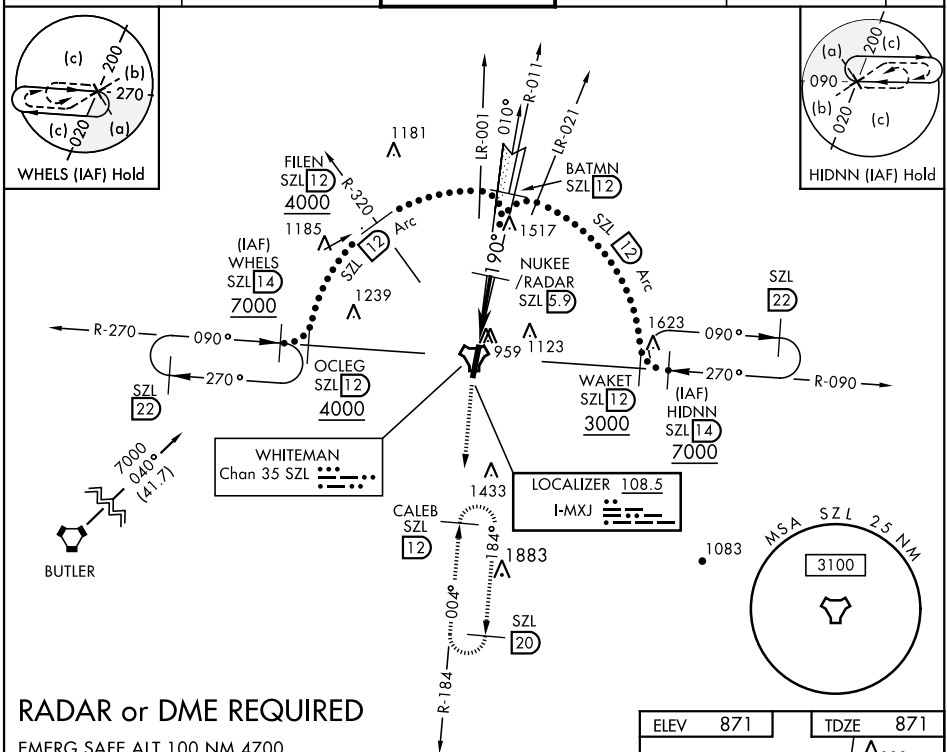


HI-ILS or LOC Z RWY 19

LOC 1-MXJ 108.5	APCH CRS 190°	Rwy ldg 12,400 TDZE 871 Arpt Elev 871	JAL-496 [USAF]	WHITEMAN AFB (KSZL)		
▼ * When ALS inop, increase CAT CDE RVR to 40 and vis to ¾ mile. ** When ALS inop, increase CAT CDE RVR to 55 and vis to 1 mile. *** Circling not authorized W of Rwy 1-19.			ALSF-1 	MISSED APPROACH: Climb to 3000 via SZL TACAN R-184 to CALEB and hold.		
ATIS 118.725 239.025		WHITEMAN APP CON 127.45 284.0	WHITEMAN TOWER ★ 132.4 318.8	GND CON 128.275 275.8	CLNC DEL 121.75 335.8	ASR



RADAR or DME REQUIRED

EMERG SAFE ALT 100 NM 4700

