

HI-TACAN Z RWY 1

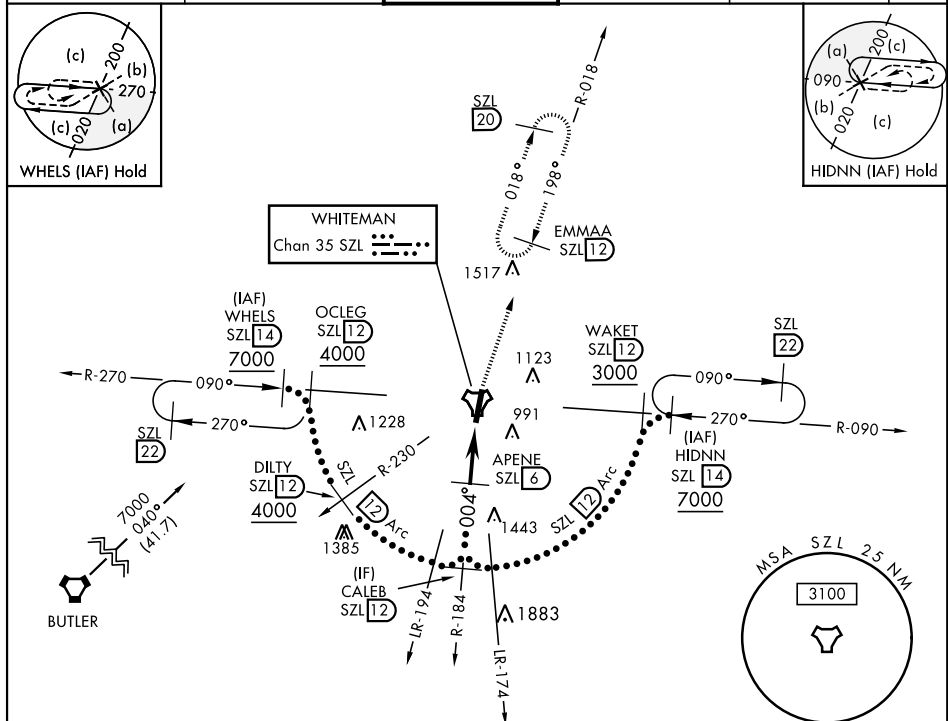
TACAN SZL Chan 35	APCH CRS 004°	Rwy Idg 12,400 TDZE 837 Arpt Elev 871	JAL-496 [USAF]	WHITEMAN AFB (KSZL)
-----------------------------	-------------------------	--	----------------	---------------------

T * When ALS inop, increase CAT CDE vis to 1¼ miles.
** Circling not authorized W of Rwy 1-19.

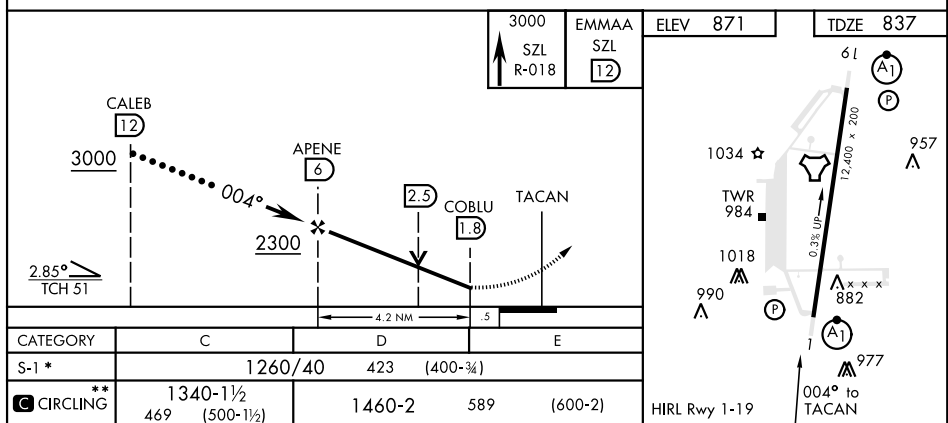
ALSF-1

MISSED APPROACH: Climb to 3000 via SZL TACAN R-018 to EMMAA and hold.

ATIS 118.725 239.025	WHITEMAN APP CON 127.45 284.0	WHITEMAN TOWER★ 132.4 318.8	GND CON 128.275 275.8	CLNC DEL 121.75 335.8	ASR
-------------------------	----------------------------------	--------------------------------	--------------------------	--------------------------	-----



EMERG SAFE ALT 100 NM 4700



KNOB NOSTER, MISSOURI

38°43'N-93°33'W

WHITEMAN AFB (KSZL)

Amdt 1 10OCT19

HI-TACAN Z RWY 1