

KNOB NOSTER, MISSOURI

RNAV (GPS) RWY 1

APCH CRS	Rwy Idg	12,400
010°	TDZE	837
	Arpt Elev	871

AL-496 (USAF)

WHITEMAN AFB (KSZL)

⚠ * When ALS inop, increase CAT AB RVR to 55 and vis to 1 mile, CAT CDE vis to 1 3/8 miles.
** Circling not authorized W of Rwy 1-19.

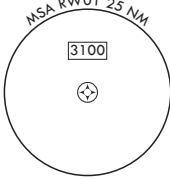
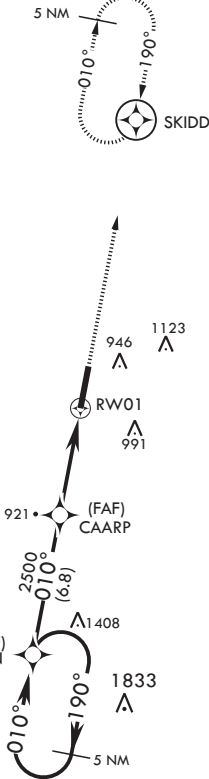
ALSF-1



MISSED APPROACH: Climb to 3000 direct SKIDD and hold.

ATIS	APP CON	TOWER*	GND CON	CLNC DEL	ASR
118.725 239.025	127.45 284.0	132.4 318.8	128.275 275.8	121.75 335.8	

DME/DME RNP 0.3 N/A




EMERG SAFE ALT 100 NM 4700

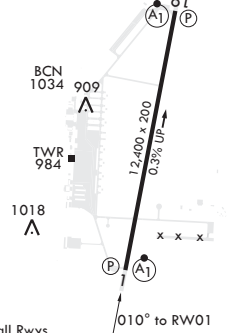
3000 **190°** **BEEAN** **010°** **CAARP** **2500** **1.3 NM to RW01** **RW01** **5.2 NM**

2.92° **TCH 51**

3000 **SKIDD** **ELEV 871** **TDZE 837**



BCN 1034 **909** **TWR 984** **1018** **12,400 x 200** **0.3% UP** **010° to RW01**



CATEGORY	A	B	C	D	E
LNAV MDA*	1280/24 443 (500-1/2)		1280/45 443 (500-3/4)		
CIRCLING**	1300-1 429 (500-1)	1340-1 469 (500-1)	1340-1 469 (500-1 1/2)	1460-2 589 (600-2)	

KNOB NOSTER, MISSOURI

38°44'N - 93°33'W

WHITEMAN AFB (KSZL)

Amdt 6 10OCT19

RNAV (GPS) RWY 1

NC-3, 03 DEC 2020 to 31 DEC 2020

NC-3, 03 DEC 2020 to 31 DEC 2020