

KNOB NOSTER, MISSOURI

RNAV (GPS) RWY 19

APCH CRS	Rwy Idg	12,400
190°	TDZE	871
	Arpt Elev	871

AL-496 (USAF)

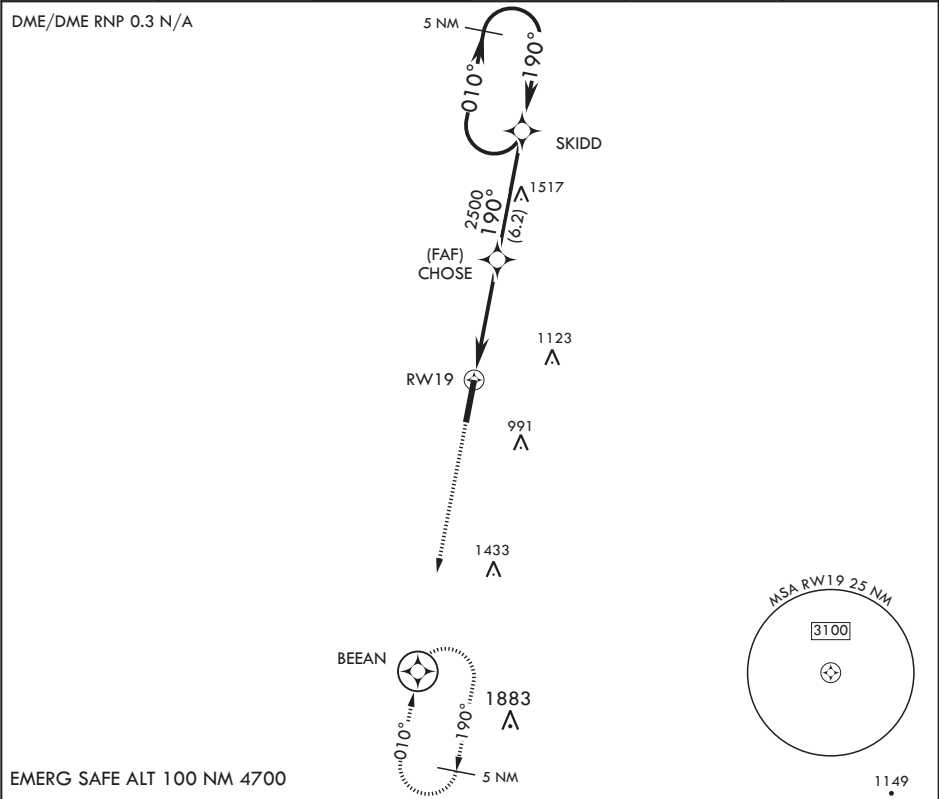
WHITEMAN AFB (KSZL)

**⚠** \* When ALS inop, increase CAT A/B RVR to 55 and vis to 1 mile, CAT C/D RVR to 60 and vis to 1 1/8 miles.  
\*\* Circling not authorized W of Rwy 1-19.

**ALSF-1**

**MISSED APPROACH:** Climb to 3000 direct BEEAN and hold.

ATIS 118.725 239.025	APP CON 127.45 284.0	TOWER* 132.4 318.8	GND CON 128.275 275.8	CLNC DEL 121.75 335.8	ASR
-------------------------	-------------------------	-----------------------	--------------------------	--------------------------	-----



EMERG SAFE ALT 100 NM 4700

**3000** **BEEAN**

**SKIDD** **CHOSE** **RW19**

**ELEV 871** **TDZE 871**

CATEGORY	A	B	C	D	E
LNAV MDA*	1260/24 389 (400-1/2)	1260/35 389 (400-3/4)	1340-1 469 (500-1 1/2)	1460-2 589 (600-2)	
<b>C</b> CIRCLING**	1300-1 429 (500-1)	1340-1 469 (500-1)	1340-1 469 (500-1 1/2)	1460-2 589 (600-2)	

HIRL all Rwys

KNOB NOSTER, MISSOURI

38°44'N - 93°33'W

WHITEMAN AFB (KSZL)

Amdt 6 10OCT19

RNAV (GPS) RWY 19

NC-3, 03 DEC 2020 to 31 DEC 2020

NC-3, 03 DEC 2020 to 31 DEC 2020