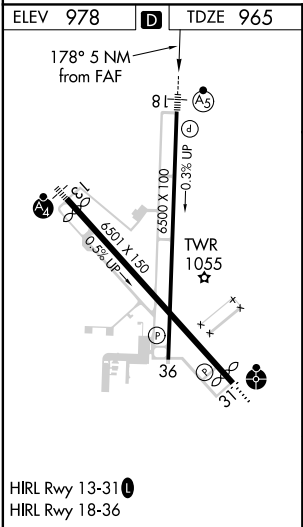
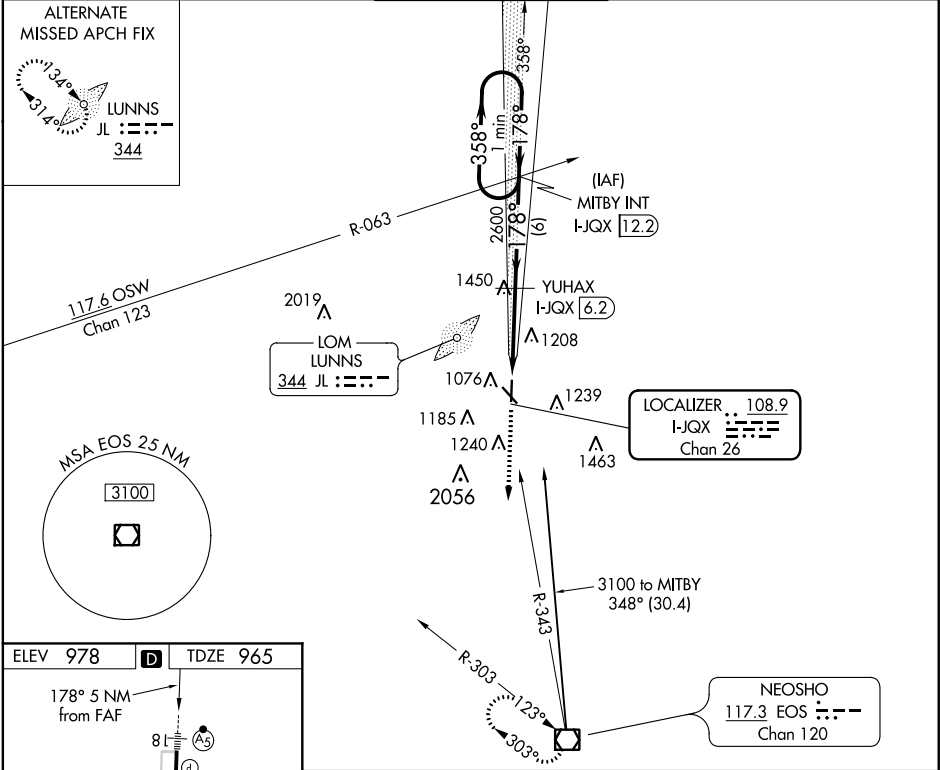


LOC/DME I-JQX 108.9 Chan 26	APP CRS 178°	Rwy Idg 6499 TDZE 965 Apt Elev 978
---	------------------------	---

ILS or LOC RWY 18
JOPLIN RGNL (JLN)

DME required for LOC only.	MALSR 	MISSED APPROACH: Climb to 3100 via heading 178° and EOS R-343 to EOS VOR/DME and hold.
----------------------------	-----------	--

ATIS 120.85	KANSAS CITY CENTER 128.6 282.325	JOPLIN TOWER★ 119.8 (CTAF) 0	GND CON 121.6	UNICOM 122.95
-----------------------	--	--	-------------------------	-------------------------



3100 hdg 178°	EOS R-343	EOS 	YUHAX I-JQX [6.2]	MITBY INT I-JQX [12.2]	One Minute Holding Pattern
GS 3.00° TCH 46					
CATEGORY	A	B	C	D	
S-ILS 18	1165/24 200 (200-1/2)				
S-LOC 18	1340/24 375 (400-1/2)				1340/40 375 (400-3/4)
CIRCLING	1460-1 482 (500-1)	1500-1 522 (600-1)	1540-1 562 (600-1 1/2)	1600-2 622 (700-2)	

NC-3, 03 DEC 2020 to 31 DEC 2020

NC-3, 03 DEC 2020 to 31 DEC 2020