

WAAS CH 97309 W18A	APP CRS 178°	Rwy Idg 6499 TDZE 965 Apt Elev 978
--	------------------------	---

RNAV (GPS) RWY 18
JOPLIN RGNL (JLN)

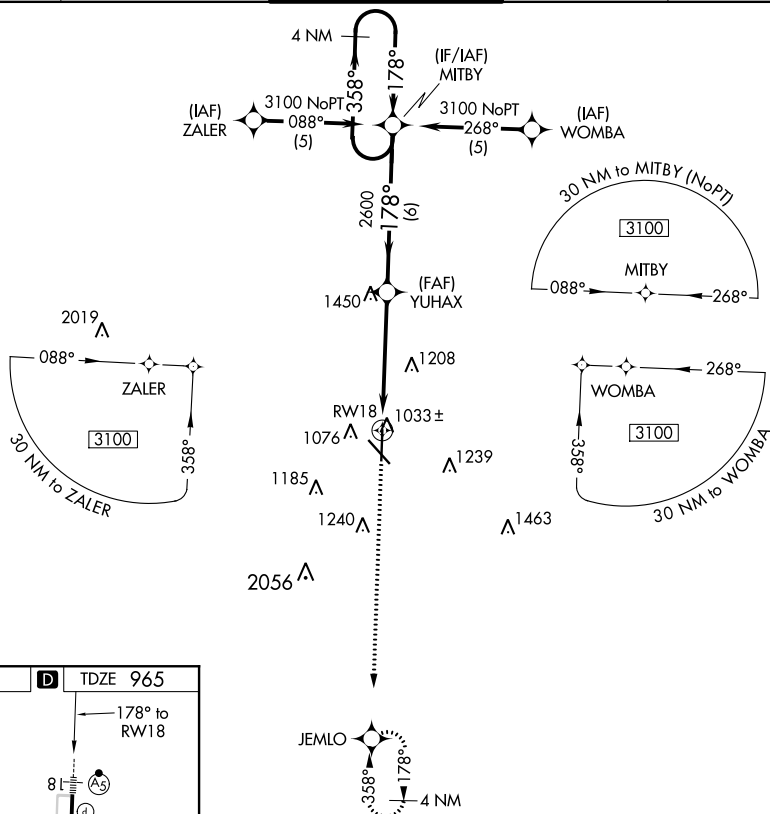
RNP APCH.

T For uncompensated Baro-VNAV systems, procedure NA below -16°C (4°F) or above 54°C (130°F). For inoperative MALSR, increase LPV all Cats visibility to RVR 5000.

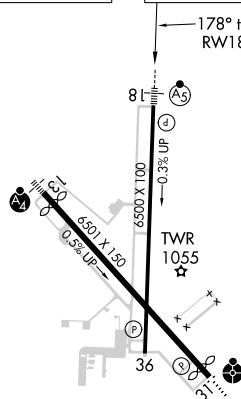


MISSED APPROACH:
Climb to 3100 direct
JEMLO and hold.

ATIS 120.85	KANSAS CITY CENTER 128.6 282.325	JOPLIN TOWER★ 119.8 (CTAF) 0	GND CON 121.6	UNICOM 122.95
-----------------------	--	--	-------------------------	-------------------------



ELEV 978	D	TDZE 965
----------	----------	----------



HIRL Rwy 13-31 **L**
HIRL Rwy 18-36

3100 ↑	JEMLO ✦	* LNAV only.		YUHAX	MITBY	4 NM Holding Pattern	3100
RW18		* 1.9 NM to RW18		2600	178°	358°	GP 3.00° TCH 46
1.9 NM		3.1 NM		6 NM			
CATEGORY	A		B		C		D
LPV DA	1220/24		255 (300-½)				
LNAV/VNAV DA	1460/60		495 (500-1¼)				
LNAV MDA	1600/24 635 (700-½)		1600/60 635 (700-1¼)		1600-1½ 635 (700-1½)		
CIRCLING	1600-1¾ 622 (700-1¾)				1600-2 622 (700-2)		

RNAV (GPS) RWY 18