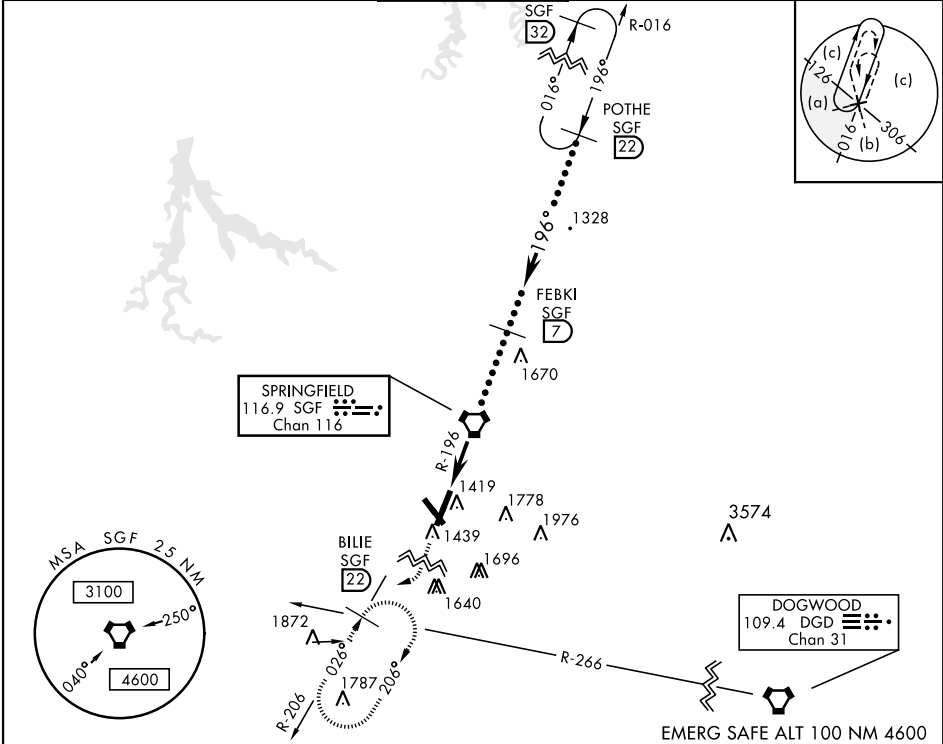
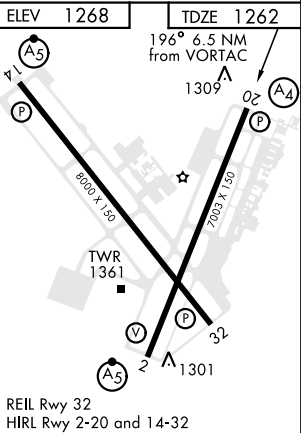


| | | | | | |
|--|------------------------------------|--|-------------------------|--|--|
| VORTAC SGF 116.9 Chan 116 | APCH CRS 196° | Rwy Idg TDZE 1262 Arpt Elev 1268 | JAL-604 [USAF] | SPRINGFIELD-BRANSON NATIONAL (KSGF) | |
| When local altimeter setting not received, use Monett altimeter setting. | | | MALS A4 | MISSED APPROACH: Climb to 3000 then right turn via SGF VORTAC R-206 to BLUE INT/SGF 22 DME and hold. | |
| ATIS 135.125 | SPRINGFIELD APP CON 121.1 290.5 | SPRINGFIELD TOWER 119.9 257.8 | GND CON 121.9 251.15 | CLNC DEL 123.675 | |



| | | | | | | | |
|-----------|--------------|-----------|--------------|---|---------------------------------------|--------------|--------|
| 3000 | | SGF R-206 | BLUE SGF 22 | VDP NA when using Monett altimeter setting. | | POTHE 22 | 15,000 |
| R-196 6.5 | | 196° | 3400 | 3400 | 196° | 3.02° TCH 47 | |
| CATEGORY | | C | D | E | MONETT ALTIMETER SETTING MINIMUMS | | |
| S-20 | 1760-1¼ | | 1760-1½ | 1760-1¾ | REIL Rwy 32 HRL Rwy 2-20 and 14-32 | | |
| | 498 (500-1¼) | | 498 (500-1½) | 498 (500-1¾) | | | |
| CIRCLING | 1820-1½ | | 1820-2 | 1920-2¼ | | | |
| | 552 (600-1½) | | 552 (600-2) | 652 (700-2¼) | | | |
| S-20 | 1860-1½ | | 1860-1¾ | 1860-2 | SPRINGFIELD, MISSOURI Amdt 1 14093 | | |
| | 598 (600-1½) | | 598 (600-1¾) | 598 (600-2) | | | |
| CIRCLING | 1920-1¾ | | 1920-2¾ | 2020-2¾ | 37°15'N-93°23'W | | |
| | 652 (700-1¾) | | 652 (700-2¾) | 752 (800-2¾) | | | |



NC-3, 03 DEC 2020 to 31 DEC 2020

NC-3, 03 DEC 2020 to 31 DEC 2020