

WAAS CH 72933 W32A	APP CRS 319°	Rwy Idg TDZE 1268 Apt Elev 1268	8000
--	------------------------	---	-------------

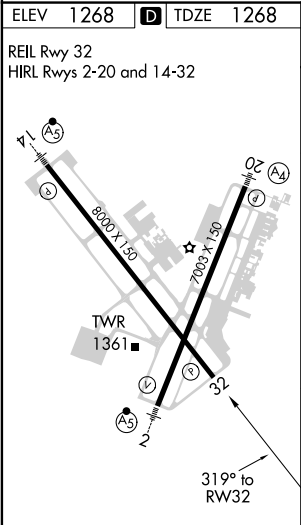
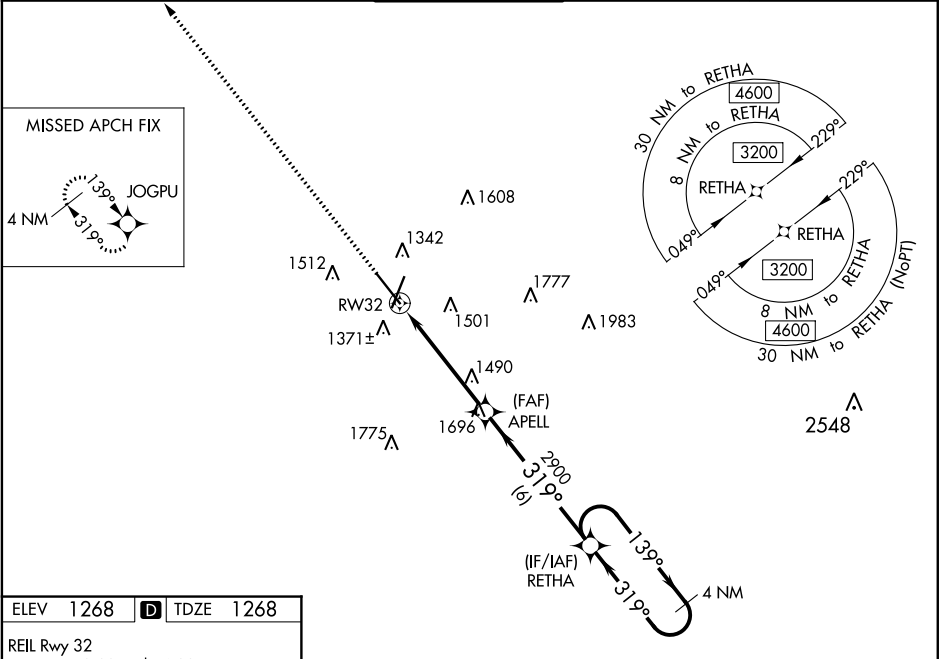
RNAV (GPS) RWY 32

SPRINGFIELD-BRANSON NATIONAL (SGF)

V Baro-VNAV and VDP NA when using Monnett altimeter setting. For uncompensated Baro-VNAV systems, LNAV/VNAV NA below -16°C (4°F) or above 54°C (130°F). When local altimeter setting not received, use Monnett altimeter setting and increase all DA 90 feet and all MDA 100 feet; increase LPV all Cts visibility 1/8 mile, LNAV/VNAV all Cts 3/8 mile, LNAV Cts C and D 1/4 mile and Circling Cat C 1/4 mile and Cat D 1/2 mile. DME/DME RNP- 0.3 NA.

MISSED APPROACH:
Climb to 3000 direct JOGPU and hold.

ATIS 135.125	SPRINGFIELD APP CON 121.1 290.5	SPRINGFIELD TOWER 119.9 257.8	GND CON 121.9 251.15	CLNC DEL 123.675
------------------------	---	---	--------------------------------	----------------------------



3000	JOGPU	VGSI and RNAV glidepath not coincident (VGSI Angle 3.00/TCH 35).	4 NM	Holding Pattern
* LNAV only.	APELL	2900	139°	3200
* 1.4 NM to RW32	RW32	2700	319°	
1.4 NM	3.6 NM	6 NM		GP 3.00° TCH 51
CATEGORY	A	B	C	D
LPV	DA	1518-1	250 (300-1)	
LNAV/VNAV	DA	1660-1 1/4	392 (400-1 1/4)	
LNAV	MDA	1740-1	472 (500-1)	1740-1 3/8 472 (500-1 3/8)
CIRCLING		1760-1	1820-1	1820-1 1/2 1920-2
		492 (500-1)	552 (600-1)	552 (600-1 1/2) 652 (700-2)

NC-3, 03 DEC 2020 to 31 DEC 2020

NC-3, 03 DEC 2020 to 31 DEC 2020