
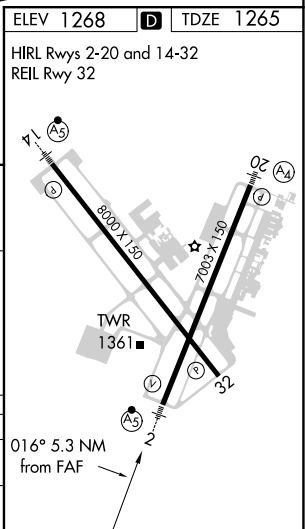


VOR/DME or TACAN RWY 2
SPRINGFIELD-BRANSON NATIONAL (SGF)

MALSR 	MISSED APPROACH: Climb to 3000 direct SGF VORTAC and hold (TACAN Aircraft continue on SGF R-024 to PLADD INT/SGF 18.4 DME and hold, north, right turns, 204° inbound).
--	---



NC-3, 03 DEC 2020 to 31 DEC 2020